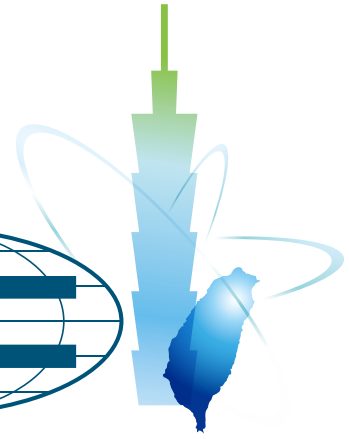




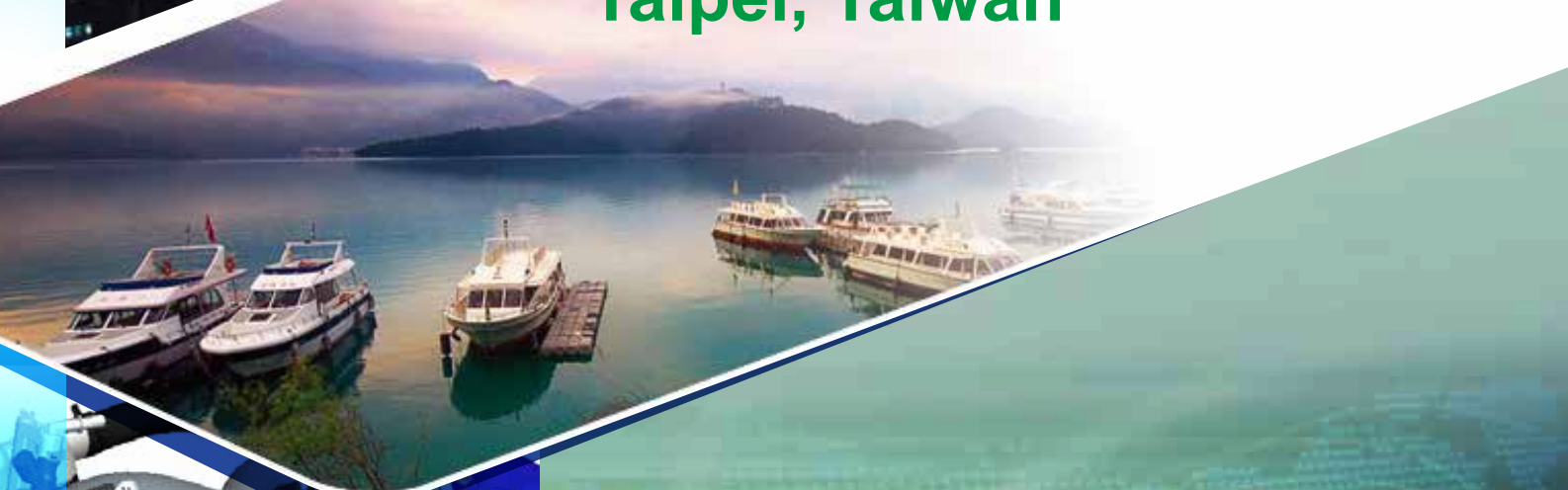
SETC
2013



19th Small Engine Technology Conference

October 8-10, 2013

Taipei, Taiwan

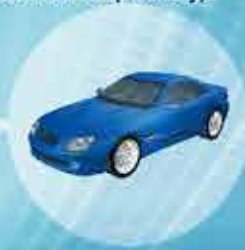


PRELIMINARY PROGRAM



SAE International

SAE Taipei
International Section



SCALEXIO

SCALEXIO® – Running Successfully

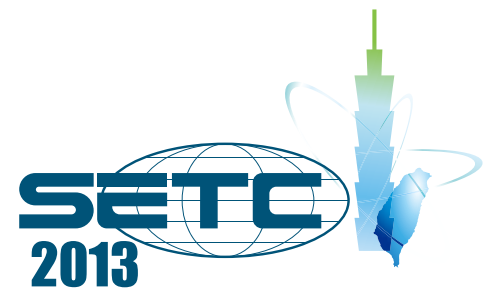
SCALEXIO, the dSPACE system for hardware-in-the-loop simulation, is up and running in many areas. Here are a few examples:

- Body electronics and vehicle dynamics
- Applications for internal combustion engines, electric motors, and transmissions
- HIL integration test systems and single ECU test systems
- The commercial vehicle, passenger car and aviation industries

SCALEXIO – It's already a success!



Table of Contents



2	PROGRAM AT-A-GLANCE
3	INTRODUCTION OF SETC 2013
4	COMMITTEE MEMBERS
7	CONFERENCE REGISTRATION
10	CONFERENCE VENUE
11	KEYNOTE SPEECH
14	PLENARY SESSION
18	EXHIBITION & POSTER SESSION WITH COFFEE BREAK, LUNCH SERVICE
19	SPECIAL EVENTS
20	SPONSORS
21	TECHNICAL VISITS
23	TECHNICAL SESSIONS
36	TRAVEL INFORMATION
37	TAIPEI INFORMATION
40	ACCOMMODATION
41	HOTEL MAP
42	ADVERTISEMENTS
56	TAIPEI METRO MAP
57	FLOOR PLAN

Acknowledgements:



PROGRAM AT-A-GLANCE

Time\Date	October 7, 2013 Monday	October 8, 2013 Tuesday	October 9, 2013 Wednesday	October 10, 2013 Thursday
08:00-09:00	Technical Visits			
09:00-10:00		Opening Ceremony & Keynote Speech (Room 201BCDE, 2F)	Technical Sessions (Room 201A, 201B, 201C, 201D, 201E, 201F, 2F)	Technical Sessions (Room 201A, 201B, 201C, 201D, 201E, 201F, 2F)
10:00-11:00				
11:00-12:00		Technical Sessions (Room 102, 103, 105, 1F; 201A, 201F, 201BCDE, 2F)		
12:00-13:00		Lunch (Banquet Hall, 3F)	Lunch (Banquet Hall, 3F)	Closing Ceremony & Lunch (Banquet Hall, 3F)
13:00-14:00			Technical Sessions (Room 201A, 201B, 201C, 201D, 201E, 201F, 2F)	
14:00-15:00				
15:00-16:00			Technical Sessions (Room 201A, 201B, 201C, 201D, 201E, 201F, 2F)	
16:00-17:00				Plenary Session (Room 102, 1F)
17:00-18:00				
18:00-19:00		Welcome Reception (33F, TWTC)	Banquet (VIP Room, 4F)	
19:00-20:00				
20:00-21:00				

- Registration: Lobby, 1F
 - TWTC: Taipei World Trade Center (See page 19)
- Note) Room and time are subject to change in the final program.

INTRODUCTION OF SETC 2013

Theme: Challenges for Energy Conservation

Since the first event in 1989, the Small Engine Technology Conference (SETC) continues to be the international technology conference for small engines and related products. SETC is jointly sponsored each year by the Society of Automotive Engineers of Japan, Inc. (JSAE) and SAE International.

JSAE is pleased to organize the 19th SETC that will be held from October 8 to October 10, 2013 at Taipei International Convention Center in Taipei, Taiwan. The event is co-organized by SAE International Taipei Section and also supported by Japan Land Engine Manufacturers Association (LEMA) and Japan Marine Industry Association (JMIA).

SETC2013 is themed, "Challenges for Energy Conservation". Due to growing expansion of world economy, we see rapid increase in demand for energy while that for small power source rising because of useful and affordable machines. Energy conservation is a key issue to foresee future potential of small power sources.

Technical visits and plenary session are planned for enlarging experience to the conference attendees besides exhibition and poster session. Technical exhibition will link technical activities with support to presentation of work in progression various fields, while poster session designed to promote technological information exchange between academia and business industry.

SETC HISTORY

Conference	City	Country
SETC 1989	Milwaukee	USA
SETC 1991	Yokohama & Hamamatsu	Japan
SETC 1993	Pisa	Italy
SETC 1995	Milwaukee	USA
SETC 1997	Yokohama	Japan
SETC 1999	Madison	USA
SETC 2001	Pisa	Italy
SETC 2002	Kyoto	Japan
SETC 2003	Madison	USA
SETC 2004	Graz	Austria
SETC 2005	Bangkok	Thailand
SETC 2006	San Antonio	USA
SETC 2007	Niigata	Japan
SETC 2008	Milwaukee	USA
SETC 2009	Penang	Malaysia
SETC 2010	Linz	Austria
SETC 2011	Sapporo	Japan
SETC 2012	Madison	USA
SETC 2013	Taipei	Taiwan



This event is organized under FISITA patronage

FISITA is the international federation linking the national automotive engineering societies in 37 countries. FISITA was founded in 1948 as a neutral forum for the exchange of technical knowledge on every aspect of vehicle design, development and manufacture. FISITA is a non-profit organization committed to helping create efficient, affordable, safe and sustainable automotive transportation.

COMMITTEE MEMBERS

JSAE

HONORARY COMMITTEE

Chair: Takaaki Kimura (Yamaha Motor Co., Ltd.)

Sadayuki Inobe (SUZUKI MOTOR CORPORATION)

Yuji Marui (Honda R&D Co., Ltd.)

Yoshiaki Namboku (Japan Land Engine Manufacturers Association)

Hideo Shoji (Nihon University)

Yasushi Tsuritani (Japan Marine Industry Association)

Kohei Yamada (Kawasaki Heavy Industries, Ltd.)

ORGANIZING COMMITTEE

Chair: Minoru Iida (Yamaha Motor Co., Ltd.)

Masayuki Baba (Honda R&D Co., Ltd.)

Shosaku Chiba (Honda R&D Co., Ltd.)

Shigeru Fujii (Yamaha Motor Co., Ltd.)

Masaaki Ishibashi (Honda R&D Co., Ltd.)

Ryosuke Ishikawa (SUZUKI MOTOR CORPORATION)

Yohei Kurihara (SUZUKI MOTOR CORPORATION)

Makoto Matsuo (Kawasaki Heavy Industries, Ltd.)

Yasuo Moriyoshi (Chiba University)

Yuh Motoyama (Yamaha Motor Co., Ltd.)

Yasuyuki Muramatsu (Yamaha Motor Co., Ltd.)

Yutaka Nitta (SUZUKI MOTOR CORPORATION)

Tadao Okazaki (LEMA*/Kubota Corporation)

Hideyuki Okumura (JMIA** / Yamaha Motor Co., Ltd.)

Koji Yoshida (Nihon University)

Makoto Yoshida (Yamaha Motor Co., Ltd.)

TECHNICAL COMMITTEE

Chair: Yutaka Nitta (SUZUKI MOTOR CORPORATION)

Minoru Iida (Yamaha Motor Co., Ltd.)

Hiromi Deguchi (SUZUKI MOTOR CORPORATION)

Toshimi Kobayashi (Kawasaki Heavy Industries, Ltd.)

Hiroataka Kurita (Yamaha Motor Co., Ltd.)

Takeshi Maeda (Honda R&D Co., Ltd.)

Takashi Mitome (SUZUKI MOTOR CORPORATION)

Yasuo Moriyoshi (Chiba University)

Yasuyuki Muramatsu (Yamaha Motor Co., Ltd.)

Shusuke Okada (LEMA*/YANMAR Co., Ltd.)

Tadao Okazaki (LEMA*/Kubota Corporation)

Hideyuki Okumura (JMIA**/Yamaha Motor Co., Ltd.)

Hiroshi Omote (LEMA*/YANMAR Co., Ltd.)

Tomoo Shiozaki (Honda R&D Co., Ltd.)

Koji Yoshida (Nihon University)

**LEMA: Japan Land Engine Manufacturers Association*

***JMIA: Japan Marine Industry Association*

SAE INTERNATIONAL TECHNICAL COMMITTEE

Chair: Robert Kee (Queen's University Belfast)

William Attard (MAHLE Powertrain)

Glenn Bower (University of Wisconsin-Madison)

Brian Callahan (Achates Power & Basco)

Renzo Capitani (University of Florence)

Pica Carmignani (PIAGGIO & C.S.pA.)

Paolo Citti (Marconi University)

Derek Cleasby (Bosch Engineering GmbH)

Brent Dohner (Lubrizol UK)

Roy Douglas (Queen's University Belfast)

Ken Fosaaen (Kerdea Technologies Inc.)

Roberto Gentili (University of Pisa)

Jaal Ghandhi (University of Wisconsin-Madison)

James Carroll (Southwest Research Institute)

Peter Kaub (Re-Sol, LLC)

Ken Kicinski (Harley-Davidson Motor Company)

Paul Litke (AFRL)

Joe Lominaco (Harley-Davidson Motor Company)

Nagesh Mavinahally (Mavin Tech, LLC.)

Geoff McCullough (Queen's University Belfast)

Jay Meldrum (Michigan Technological University)

Scott Miers (Michigan Technological University)

Dan Nehmer (John Deere Company)

David Palmer (BRP)

Marco Pierini (ATA- Associazione Techica dell' Automobile & University of Florence)

Giuseppe Pozzana (Polo of Innovation for Mechanics & Vehicle of the Tuscany Region)

Thorsten Raatz (Robert Bosch LLC)

Enrico Rebaudo (Continental)

Paul Richards

Stephan Schmidt (Graz University of Technology)

Sebastian Strauss (STIHL Inc.)

David Thornhill (Queen's University Belfast)

Tony Szczołka (Robert Bosch Corp.)



SAE INTERNATIONAL TAIPEI SECTION

ORGANIZING COMMITTEE

Chair: Han-Ying Wang (Industrial Technology Research Institute of Taiwan, R.O.C.)

Shyue-Bin Chang (Kao Yuan University)

Ching-Ya Chen (China Motor Corporation)

Hung-Wei Chen (China Motor Corporation)

Bo-Liang Chen (Industrial Technology Research Institute of Taiwan, R.O.C.)

Chia-Jui Chiang (National Taiwan University of Science and Technology)

Rong-Fang Horng (Kun Shan University)

Shih-Fang Hsieh (Automotive Research & Testing Center)

Wen-Hsien Hsu (Automotive Research & Testing Center)

Chih-Shan Hsu (China Motor Corporation)

Sih-Wei Huang (National Taipei University of Technology)

Wen-Fang Hwang (Taiwan Transportation Vehicle Manufacturers Association)

Hsin-Ya Lee (China Motor Corporation)

Ching-Chiu Liao (Automotive Research & Testing Center)

Han-Ching Lin (China Motor Corporation)

Hai-Ping Lin (Da-Yeh University)

Tyng Liu (National Taiwan University)

Jiunn-Jye Lu (Ford Lio Ho Motor Co., Ltd.)

Jau-Huai Lu (National Chung Hsing University)

Yuh-Yih Wu (National Taipei University of Technology)

Chin-Chang Wu (Taiwan Transportation Vehicle Manufacturers Association)

TECHNICAL COMMITTEE

Chair: Yuh-Yih Wu (National Taipei University of Technology)

Shyue-Bin Chang (Kao Yuan University)

Hai-Ping Lin (Da-Yeh University)

Jau-Huai Lu (National Chung Hsing University)

Chia-Jui Chiang (National Taiwan University of Science and Technology)

Rong-Fang Horng (Kun Shan University)

CONFERENCE REGISTRATION

On-line registration is scheduled to begin at the beginning of June 2013 on the SETC website where technical visits participation and banquet coupon will be available to purchase.

IMPORTANT DATES

- Early Bird Registration Deadline August 30, 2013
- Online Registration Deadline September 13, 2013

REGISTRATION FEE

Category		Online Registration		Onsite
		Early-bird (Before Aug. 30, 2013)	Regular (Aug. 31 - Sep. 13, 2013)	
Presenting Author	Other than Student	NT\$15,000	-	-
	Student SAE/JSAE/SAE-TPE Member	NT\$1,500	-	-
	Student Non- Member	NT\$2,000	-	-
Participant	Session Chair (incl. committee members, organizers)	NT\$15,000	NT\$15,000	NT\$15,000
	SAE/JSAE/SAE-TPE Member	NT\$18,000	NT\$22,000	NT\$22,000
	Non- Member	NT\$22,000	NT\$26,000	NT\$26,000
Student	SAE/JSAE/SAE-TPE Member	NT\$1,500	NT\$1,500	NT\$1,500
	Non- Member	NT\$2,000	NT\$2,000	NT\$2,000
Accompanying Person		NT\$2,000	NT\$2,500	NT\$2,500

[Important Notice to Presenting Author]

All presenting authors are requested to finish registration by August 30, 2013 as an early-bird. Any delay must be informed to SETC2013 Local Secretariat with the reason before the day. Unless such delay is justifiable and given in due course to the secretariat, his/her technical paper and the co-author(s) information may be deleted in the final program and proceedings.

c/o Elite Professional Conference Organizer Email: setc2013@elitepc.com.tw

Tel: +886-2-8502-7087

Fax: +886-2-8502-7025

ENTITLEMENTS

- **Presenting Author/Participant/Student**
 - ⊙ Admission to technical sessions, plenary session, exhibition and poster session
 - ⊙ Admission to all social programs (Welcome Reception/Opening, Awards & Closing Ceremony)
 - ⊙ Conference Bag (Conference Bag, Badge, Program Book & Proceedings in USB)
 - ⊙ Lunch & Coffee Break
- **Accompanying Person**
 - ⊙ Admission to exhibition and poster session
 - ⊙ Admission to all social programs (Welcome Reception/Opening, Awards & Closing Ceremony)
 - ⊙ Lunch & Coffee Break



ADDITIONAL PURCHASE

Technical Visits

- **Date:** Monday, October 7, 2013
- **Time:** 08:00-16:30
- **Route A:** Taipei
- **Route B:** Hsinchu
- **Fee:** NT\$1,500 (lunch included)

See page 21, Technical Visits for more information.

Banquet

- **Date:** Wednesday, October 9, 2013
- **Time:** 18:30-21:00
- **Venue:** VIP Room, 4F, Taipei International Convention Center (TICC)
- **Fee:** NT\$2,400/coupon

See page 19, Banquet for more information.

PAYMENT

All Payment must be made in New Taiwan Dollars (NTD) under one of the following payment options:

- **Credit Card :** Major credit cards only such as VISA and Master.
- **Bank Transfer**

Note that Personal/company check is unaccepted.

Domestic

Beneficiary Account Name	中華民國自動機工程學會
Beneficiary Account Number	0369-940-009275
Beneficiary Bank	玉山銀行楊梅分行

Overseas

Beneficiary Account Name	SAE International Taipei Section
Beneficiary Account No.	0369-940-009275
Swift Code	ESUNTWTP
Bank Name	E. Sun Commercial Bank Ltd.
Branch	Yangmei Branch

- **Onsite Payment**

Cash (NTD) or credit card will be accepted at the onsite registration counter, Lobby, 1F, TICC.

CANCELLATION AND REFUND

- **Refund Policy**

Notification of cancellation and request for refund must be made in writing to SETC2013 Local Secretariat:

c/o Elite Professional Conference Organizer Email: setc2013@elitepco.com.tw

Tel: +886-2-8502-7087

Fax: +886-2-8502-7025

Refunds, less handling fee and bank charges, will be made after the Conference as follows:

Cancellation requests received on or before August 30, 2013	100%
Cancellation requests received during August 31- September 13, 2013	50%
Cancellation requests received after September 13, 2013	No refund

CONFERENCE VENUE

TAIPEI INTERNATIONAL CONVENTION CENTER (TICC)

No. 1, Hsin-Yi Rd., Sec.5, Taipei 11049 Taiwan R.O.C.

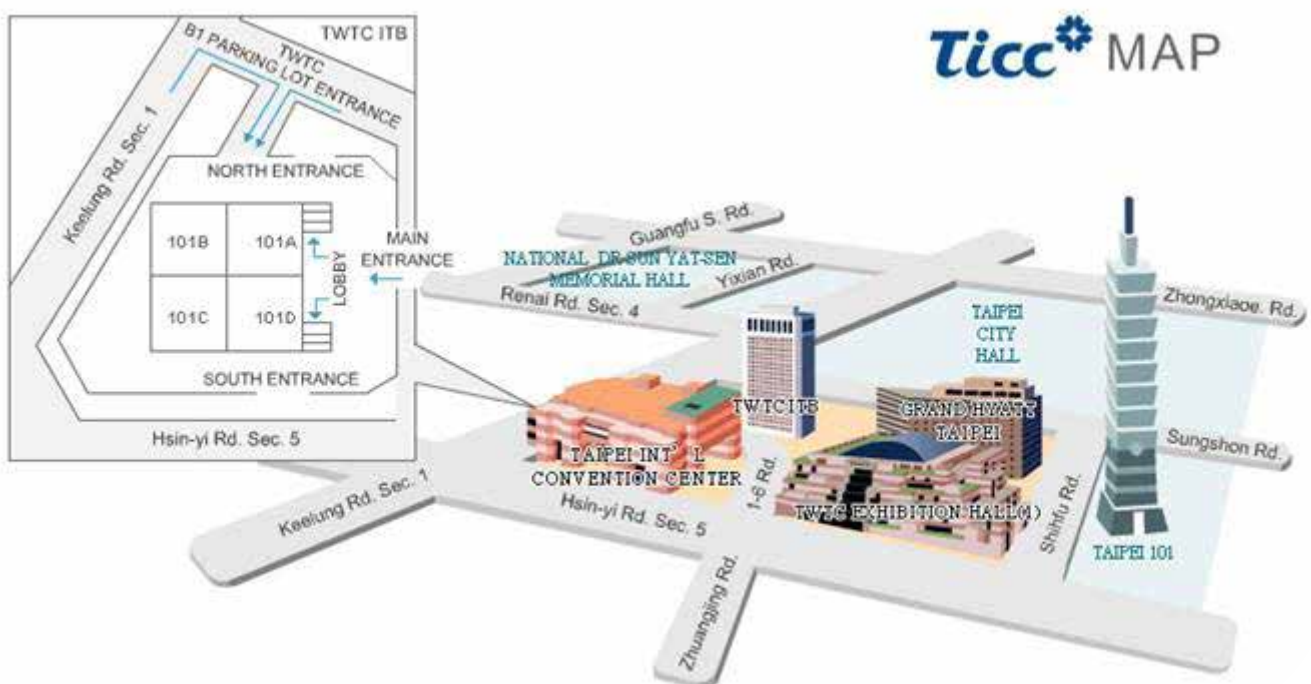
Tel: +886-2-2725-5200

Fax: +886-2-2723-2589

The Taipei International Convention Center (TICC) is a spectacular tribute to the emergence of Taipei as a world-class business destination, which is in the commercial circle and within walking distance to the Metro station connected to tourist attractions, shopping and dining centers. The purpose-built convention meets all the requirements of international meetings, exhibitions and Congress. TICC is also equipped with state-of-the-art facilities and operational features, as well as an uncompromisingly high standard of service.



The TICC is situated in the foothills of eastern Taipei's Hsin-yi District, an area where the modern face of Taipei shines with glass and steel skyscrapers, one of the tallest buildings in the world, wide boulevards, and the Taipei World Trade Center complex. As the political, economic, and cultural center of Taipei, the district houses many landmark buildings, including the Taipei City Hall, Taipei City Council, National Dr. Sun Yat-Sen Memorial Hall, and Taipei 101.



KEYNOTE SPEECH

09:30-10:30, TUESDAY, OCTOBER 8, 2013
ROOM 201BCDE, 2F

SPEAKERS

SUBJECT: LIGHT, SLIM, COMPACT - KEYWORD TO REVS YOUR HEART



MR. KUNIHICO MIWA

Japan

Senior Executive Officer of the Second Business Unit
Motorcycle Business Operations, Yamaha Motor Co., Ltd.

Kunihiro MIWA started his professional career in 1978 at Yamaha Motor Co., Ltd. as a development engineer of motorcycle. After the experience of development of road race motorcycle, he became a project leader of motorcycle production model in the category of supersport in 1993. In 2002, he joined the management of Yamaha Motor Co., Ltd. as the manager of the product management division of the Motorcycle Business Operations. In 2009, he became an executive officer as the senior general manager of the commuter vehicle unit of the Motorcycle Business Operations. He is now the senior executive officer of the 2nd Business unit of the Motorcycle Business Operations. He also has experience to stay in Taiwan as the president of Yamaha Motor R&D Taiwan Co., Ltd between 2006 and 2008.

During his career, his contribution to motorcycle development is very deep and broad: from small commuter to high performance supersport: from production to racing motorcycle.

SUBJECT: SIMPLE IDEAS MAKE BETTER SMALL ENGINES



PROF. ROBERTO GENTILI

Italy

Professor, Università di Pisa

Roberto Gentili graduated in Mechanical Engineering from the University of Pisa in 1974. In 1976 and 1977 he spent his first two years of research activity at the University of Florence. In 1978 he joined the University of Pisa, where he holds the position of Full Professor, chairs the Council for the Master's Degree Course in Vehicle Engineering and is teaching Fluid Machines and Internal Combustion Engines.

In very large prevalence the scientific activity of Roberto Gentili regards engines for land vehicles (cars and motorcycles) and is aimed at developing solutions that are often original and involve a multidisciplinary approach, thanks to the contribution of specialists of other fields. A number of studies takes advantage of the cooperation with prestigious Italian and foreign research institutes and universities.

More than one hundred papers, published on proceedings of conferences and scientific reviews, as well as several patents, prove this activity, that in addition finds acknowledgment in the roles of chairman or organiser that Gentili had in several national and international conferences, besides various invitations to meetings and conventions on I.C. engines and motor vehicles.

Several times Gentili has coordinated research groups for research supported by CNR (Italian National Research Council), by Pisa University, by Italian Ministries and by agreements with industrial companies. He was member of several commissions for university contests. In the three-year period 1984-'86 he served on CUN (National University Council) 09 Advisory Committee for the assignment of M.P.I. (Public Instruction Ministry) 40% funds for scientific research. Since 1994 he has been SAE member. He is currently Vice President of ATA (Technical Association of Automobile) Tuscany, which he chaired from 2009 to 2012 and on the guiding board of which he has been serving for over twenty years.

SUBJECT: OVERVIEW OF TAIWAN CLEANER PROPULSION SYSTEM TECHNOLOGY DEVELOPMENT



MR. JET P.H. SHU

Taiwan

Advisor, Science & Technology, DoIT, Ministry of Economic Affairs (MOEA)

Date of Birth: July 10, 1954

Education: Ph. D. Degree, Aerospace Engineering, Auburn University, USA

Work Experience:

- 1976~1985: Assistant & Associate Researcher of Rocket Science & Propulsion System Technology Projects, CSIST & NASA.
- 1985~1991: Engineer & Manager of Automotive Product Engineering, Ford Motor Company, US & Taiwan.
- 1991~2006: Deputy General Director of Powertrain Engineering, Auto-Electronics, and Electric Scooter Technology, ITRI.
- 2006~2008: VP & CEO of Auto-Electronics System Development, Manufacturing, Sales, and Marketing, Liteon Automotive & EPS Co..
- 2008~Now: Visiting Industry Professor, Mechanical Engineering of Taiwan University & Automotive Engineering of Taipei Tech.
- 2009~Now: Advisor, Science & Technology, DoIT, MOEA

PLENARY SESSION

Theme: Motorcycles in Asian Region (Tentative)

15:00 - 17:30, WEDNESDAY, OCTOBER 9, 2013

ROOM 102, 1F

MODERATOR



PROF. NORIMASA IIDA

Japan

Department of System Design Engineering
Faculty of Science and Technology, Keio University Japan

Norimasa Iida is a Professor in the Faculty of Science and Technology at Keio University, Japan. He obtained his PhD in 1983 from Keio University on the topics of propagation and extinction mechanisms of premixed flames flowing into a narrow channel from a combustible-gas-charged chamber, from where he started his career.

Norimasa Iida spent a very productive year as a Visiting Assistant Professor working at the Engine Research Center, University of Wisconsin-Madison, USA.

He headed a project "Low Heat Rejection Ceramics Two-stroke Methanol Engine" at Kanagawa Academy of Science and Technology in Japan.

Norimasa Iida has contributed his research work in the combustion and emission of internal combustion engines with his special interests in life cycle assessment for next generation vehicles. He, as a leader in HCCI combustion research, has published more than 100 papers on the subject, most of which are presented at SAE International, JSAE and JSME.

Norimasa Iida is currently serving as Vice Chair of JSAE Technology Board.

- 1973 Graduated from Department of Mechanical Engineering, Faculty of Engineering, Keio University, Japan
- 1980 Earned Doctor of Engineering at Keio University
- 1983 Became Assistant, Faculty of Science and Technology, Keio University
- 1985 Became Assistant Professor, Faculty of Science and Technology, Keio University
was appointed Visiting Professor in Mechanical Engineering Department, University of Wisconsin, Madison, USA
- 1990 Headed Ceramics Methanol Engine Project, Kanagawa Academy of Science and Technology, Japan
- 1991 Became Associate Professor, Faculty of Science and Technology, Keio University
- 1997 Became Professor, Faculty of Science and Technology, Keio University

SPEAKERS



PROF. ICHIRO KAGEYAMA

Japan

Professor, Dr. of Engineering

- Nihon University, College of Industrial Technology, Department of Mechanical Engineering, Japan
- Director of Nihon University Center for Automotive Research (NU-CAR)
- Academic Affairs in Charge for College of Industrial Technology, Nihon University

Prof. Kageyama was born in 1949 in Tokyo, Japan. He graduated from Nihon University, College of Science and Technology in 1972. Then, he went on to the graduate school, and he took the doctor degree in 1977 from Nihon University. Since 1977, he has engaged in Nihon University, College of Industrial Technology, Department of Mechanical Engineering.

His research fields are vehicle dynamics and control, human interface, motorcycle dynamics and control, articulated vehicle dynamics and control, and so on. From 1989 to 1990, he had been a visiting researcher on the Technical University of Delft, in the Netherlands.

Since 1994, he has been a professor of Nihon University. He had been a visiting researcher on the National road and traffic research institute, in Sweden for 6 months in 2004. He founded the Nihon University Center for Automotive Research (NU-CAR) in 2010, and he has been the director up to now.



MR. CHUN-PING KO

Taiwan

- Executive Vice-President and CFO of Kwang Yang Motor Co., Ltd.
- Director of Kwang Yang Motor Co., Ltd.
- Director of Taiwan Transportation Vehicle Manufacturers Association
- Deputy Managing Director of Motorcycles Manufacturing Committee
- Director of Eternal Chemical Co., Ltd.

Profile

- Comprehensive experience in sales, marketing, financial management and new business development, including strategic planning, business environmental analysis, new business investment, and new business negotiation.
- Proven ability to grow sales through proficient management of sales professionals.
- Skilled in recruiting, hiring and training sales professionals to successfully manage an independent network of dealers with consistent emphasis on increased productivity.
- Proficient in executive and large group financial management.

CFO and Executive Vice President September 2006 to Present

Executive Rooms, Kymco

Promoted to CFO and Executive Vice President in 2006 with direct responsibilities include all aspects of financial management and support to CEO/ President. Achieve domestic market share from 36.3% to 41.8% during 2006 to 2012. Successfully expanded distribution channel to overseas and build up overseas subsidiaries such as Kymco USA Inc., Kymco Luxembourg S.A., Kymco Philippines Inc., and Kymco Healthcare UK Inc..

Vice president March 2002 to August 2006

Sales and Management Center, Kymco

Promoted to Vice President of Sales and Management Center in 2002 with direct responsibilities include whole company administration management and all aspects of global/domestic sales management and advertisement for 2/4 wheelers business. Achieve domestic market share from 33.8% to 36.3% during 2002 to 2006. Successfully build OEM/ ODM business and relationships to Arctic Cat, BMW, Duetz, and Kawasaki during these periods.

Experience Summary

General Manager March 1994 to March 2002

Strategy and Planning Division, Kymco

Division leader focused on strategic planning, new business investment and financial management to the company. Successfully build 6-8 J/V businesses in China. Become the Director of Taiwan Transportation Vehicle Manufacturers Association during this period.

Education

Master of Management Sciences

Tamkang University Taipei, Taiwan, R.O.C.



MR. YEIN-RUI HSIEH

Taiwan

Director General

Department of Air Quality Protection and Noise Control,
Environmental Protection Administration Executive Yuan, R.O.C.

Education

1985 B.A. in Agricultural Engineering, National Taiwan University

1987 M.S. in Civil Engineering, National Central University

Career

1989 Engineer, Bureau of Housing and Urban Development,
Taiwan Provincial Government

1990 Specialist, Environmental Protection Administration
Executive Yuan, R.O.C.

1995 Section Chief, Environmental Analysis Laboratory

2002 Senior Director, Department of Air Quality Protection and Noise Control, EPA R.O.C.

2007 Deputy Director, Department of Air Quality Protection and Noise Control, EPA R.O.C.

2009 Director General, Department of Air Quality Protection and Noise Control, EPA R.O.C.

EXHIBITION & POSTER SESSION WITH COFFEE BREAK, LUNCH SERVICE



The technical exhibition and poster session during SETC 2013 will offer a great opportunity for participants to network with colleagues and to explore the latest products and services on small engine industry. Also poster session will promote the engineering exchange and mutual understanding between academia and industries. Coffee Break will be served in the same room, participants including researchers, engineers, technicians, manufacturers and suppliers will have good chances communicating with other prominent experts and related industries.

VENUE

Room 101, 1F

EXHIBITION & POSTER SESSION HOURS

Tuesday, October 08, 2013	10:30-17:00
Wednesday, October 09, 2013	10:00-17:00
Thursday, October 10, 2013	10:00-12:00

LUNCH SERVICE

Venue: Banquet Hall, 3F

Type: Buffet

Lunch will be served to all registered attendees during the conference. It will start from 12:00 noon.



SPECIAL EVENTS



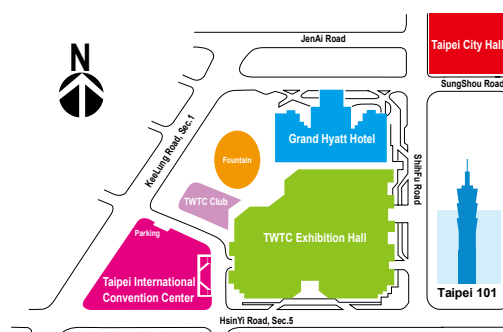
WELCOME RECEPTION

Date: Tuesday, October 8, 2013

Time: 18:00-20:00

Venue: 33F, Taipei World Trade Center (TWTC)

Attend free and enjoy magnificent night view of Taipei City.
Serve standing-buffet.



BANQUET

Date: Wednesday, October 9, 2013

Time: 18:30-21:00

Venue: VIP Room, 4F, Taipei International Convention Center (TICC)

Fee NT\$2,400/coupon

Seated buffet

Apply online registration website.

The seats will be reserved on first-come & first-served basis and application may be declined or put on a waiting list when they are fully booked.

The Banquet is located at the same venue of the conference. It is a nice opportunity to socialize and network with all the colleagues and friends, and enjoy local cuisine and experience the cultural performance.

SPONSORS

Listed as of April 23, 2013

JSAE, SAE International and SAE International Taipei Section would like to extend sincere appreciation to the following sponsors for support of the conference.



CHINA MOTOR



A & D Technology
Aeon Motor Co., Ltd.
Chevron Oronite Pte. Ltd.
dSPACE Japan K.K.
Heraeus Precious Metals GmbH & Co. KG
Honda Motor Co., Ltd.
ISID
Japan Marine Industry Association
Kawasaki Heavy Industries, Ltd.
Kubota Corporation
Kuozui Motors, Ltd.

Kwang Yang Motor Co., Ltd.
PRÜFREX Innovative Power Products GmbH
SCSK Corporation
Shyang Huei Industrial Co., Ltd.
SUZUKI MOTOR CORPORATION
TechnoStar Co., Ltd.
Vivian Wu Commerce and Industry Development Foundation
Yamaha Motor Co., Ltd.
Yamaha Motor Taiwan Co., Ltd.
YANMAR Co., Ltd.

TECHNICAL VISITS

Monday, October 7, 2013

Two routes will be arranged for technical visits to be held on Monday, October 2013 for all day long. JSAE and SAE International Taipei Section would like to express special thanks to DELTA Electronics, Inc., National Taiwan University, SYM (Sangyang Industry Co., Ltd.) and ITRI (Industry Technology of Research Institute) to provide us with valuable visit experience.

All day long

Fee NT\$1,500/coupon (lunch inclusive)

- ◎ The conference registered attendees only
- ◎ Apply from online Registration website with first-come & first-served basis
- ◎ Time schedule including departure place will be informed to the applicant in due course

ROUTE A: TAIPEI

Time: 08:00-16:30

08:00	Departure*
	DELTA (DELTA Electronics, Inc.)
	National Taiwan University
	Lunch
	National Palace Museum
16:30	Taipei 101(dismiss)

*Pick up point: TBD



DELTA

DELTA is a leading world-class provider of:

- Power management solutions
- IT, telecom, consumer and automotive electric components
- Visual displays including microdisplay PTVs
- Networking and wireless solutions.



NATIONAL TAIWAN UNIVERSITY

Being the first integrated and most prestigious institution of higher education in Taiwan area, National Taiwan University has taken up the responsibility of promoting the level of academic research study and teaching in Taiwan.



NATIONAL PALACE MUSEUM

The National Palace Museum (NPM) in Taipei is home to one of the foremost collections of Chinese art and objects in the world. The extensive range includes bronzes, jades, ceramics, lacquerware, curios, calligraphy, painting, rare books, documents, and many others.





ROUTE B: HSINCHU

Time: 08:00-16:30

08:00	Departure*
	SYM (Sanyang Industry Taiwan Co., Ltd.)
	ITRI (Industrial Technology Research Institute of Taiwan, R.O.C.)
	Lunch
	Taiwan Pavilion
16:30	Taipei 101(dismiss)

*Pick up point: TBD



SYM

SYM is proud of leading the powered vehicle industry in Taiwan. The full line up contains Scooters, Mopeds, Motorcycles and ATVs. Now SYM is a well-known brand for its worldwide distribution with advanced technology and design.



ITRI

ITRI is a nonprofit R&D organization engaging in applied research and technical services. Founded in 1973, ITRI has played a vital role in transforming Taiwan's economy from a labor-intensive industry to a high-tech industry. Numerous well-known, high-tech companies in Taiwan, such as leaders in the semiconductor industry TSMC and UMC, can trace their origins to ITRI.



TAIWAN PAVILION

Taiwan pavilion begins its operation in February, 2013. It is re-established in Hsinchu with an area about 4.3 hectares, along with the plan of an industrial innovation park which also includes Taiwan Street.

TECHNICAL SESSIONS

Tentative session timetable will be available on <http://www.setc-jsae.com/> in early August.

Listed as of April 16, 2013

ADVANCED COMBUSTION

Organizers: Koji Yoshida (Nihon University), William Attard (MAHLE Powertrain),
Jaal Gandhi (University of Wisconsin-Madison)

- 20139002 **Effects of Intake System with Swirl and Tumble Valve on the Combustion in a Small Four Stroke Engine**
Chih Wei Huang, Guan Shiu Lin, Wen Cheng Hu (SANYANG R&D Center Co., Ltd.)
- 20139030 **A Study of the Effects of Varying the Supercharging Pressure and Fuel Octane Number on Spark Ignition Engine Knocking Using Spectroscopic Measurement and In-cylinder Visualization**
Takashi Ishino, Norikuni Hayakawa, Tomomi Miyasaka (Nihon University Graduate School), Akira Iijima, Koji Yoshida, Hideo Shoji (Nihon University)
- 20139113 **Effects of High-Voltage Non-Uniform Electric Field on Premixed Flame Propagation Processes**
Kyohei Yoshino (Nihon University Graduate School), Akira Iijima, Hideo Shoji, Koji Yoshida (Nihon University)
- 20139116 **Small Kerosene Droplet Evaporation Near Butane Diffusion Flame**
Hiroshi Enomoto, Shogo Kunioka, Lukas Kano Mangalla, Noboru Hieda (Kanazawa University)
- 20139117 **Observation of Kerosene Droplet Evaporation under High Pressure and High Temperature Environment**
Hiroshi Enomoto, Kosuke Nishioka, Shunsuke Sawasaki, Lukas Kano Mangalla, Noboru Hieda (Kanazawa University)
- 20139123 **Behavior of Small Fuel Droplet near Butane Diffusion Flame**
Hiroshi Enomoto, Shogo kunioka, Noboru Hieda (Kanazawa University)
- 20139135 **Lean Combustion Study on 110cc Engine**
Christian Linder (Robert Bosch GmbH)
- 20139144 **Influence of High Frequency Ignition on the Combustion and Emission Behaviour of Small Two-Stroke SI Engines**
Markus Bertsch, Clemens Hampe, Kai Willi Beck, Ulrich Spicher (MOT GmbH)
- 20139146 **Visualization of Various Ignition Strategies in an Optically-Accessible, Constant-Volume Rotax 914 Cylinder-Head**
Keith Dee Grinstead, Jr., Adam Brown, Eric K. Anderson, John Hoke (Innovative Scientific Solutions, Inc.), Paul J. Litke (USAF AFMC AFRL/RQTC)
- 20139149 **High-Speed Schlieren Visualization of Alternative Fuel Injection and Fuel-Air Mixing in a Turbulent Swirling Chamber of a Rapid Combustion Machine**
Po-I Lee, Ming-Chia Lai (Wayne State University)

ALTERNATIVE FUELS

Organizers: Hiroshi Omote (YANMAR Co.,Ltd.), Takeshi Maeda (Honda R&D Co., Ltd.), Paul Richards

- 20139025 **Impact of Ethanol and Isobutanol Gasoline Blends on Emissions from a Small Spark-Ignited Engine**
Marie-Josée Poitras, Deborah Rosenblatt, Jeffery Goodman (Environment Canada)
- 20139038 **Utilisation of a Tyre Pyrolysis Diesel Fuel Obtained with an Innovative Thermo-Mechanical Process**
Stefano Frigo, Maurizia Seggiani, Roberto Gentili (Università di Pisa)
- 20139059 **Study on Operation Characteristics of Gasohol Biofuel in Motorcycle Engine**
Meng-Chieh Li, Zhi-Xi Xu, Yuh-Yih Wu (National Taipei University of Technology), Ta-Chuan Liu (Industrial Technology Research Institute)
- 20139080 **Combustion Characteristics of a DI Diesel Engine with Short and Medium Chain Saturated Fatty Acid Methyl Esters**
Eiji Kinoshita (Kagoshima University), Yasufumi Yoshimoto (Niigata Institute of Technology), Kazuyo Fushimi (Kagoshima University)
- 20139097 **Effect of Butanol Isomer on Diesel Combustion Characteristics of Butanol/Gas Oil Blend**
Kazuyo Fushimi, Eiji Kinoshita (Kagoshima University), Yasufumi Yoshimoto (Niigata Institute of Technology)
- 20139115 **Effects of Spark Ignition Timing on Exhaust Gas Component and Temperature with Wood Biomass Gasifier**
Hiroshi Enomoto (Kanazawa University), Hirotaka Nozue (Shizuoka Institute of Science and Technology), Noboru Hieda (Kanazawa University)
- 20139131 **Optimization of Waste Chicken Fat Pre-Treatment Process Using Response Surface Method**
Naresh Kumar Gurusala, Ajay Balan, Arul Mozhi Selvan V (National Institute of Technology, Tiruchirappalli)
- 20139134 **The Feasibility study of Butanol Fuel in Motorcycle**
Ta Chuan Liu (Industrial Technology Research Institute), Zong-Da Lin (Mechanical and Systems Research Laboratories)
- 20139138 **Microwave Pyrolysis Of Used Locomotive Lubricating Oil As Engine Fuel**
Sethumadhavan Padmanabhan, Arul Mozhi Selvan V (National Institute of Technology, Tiruchirappalli)
- 20139140 **Performance, Combustion And Emission Characteristics Of Waste Chicken Fat Methyl Ester**
Arul Mozhi Selvan V, Naresh Kumar Gurusala (National Institute of Technology, Tiruchirappalli)
- 20139145 **Comparative Study of Performance and Emission Characteristics of Biodiesel-Methanol-Diesel, Biodiesel-Ethanol-Diesel and Biodiesel-Butanol-Diesel Blend in Medium Capacity CI Engine Employing Cold EGR**
Manish V, Sahil Gupta, Naveen Kumar, Dhruv Gupta (Delhi Technological University)
- 20139147 **Comparative Spark-Ignition Engine Emission and Performance Analysis of Compressed Natural Gas (CNG) and Gasoline Fuelled in a Conversion Engine**
Seuk Cheun Choi, Jae Wook Lee, Jae Yong Jeong (Korea Institute of Industrial Technology), Sung Yoon Kim (Korea Marine Equipment Research Institute)
- 20139156 **Development of Alternative Fuel Content Estimation Method and Apparatus**
Masayoshi Uno, Takashi Abe (Kawasaki Heavy Industries, Ltd.)
- 20139168 **Performance and Emissions Optimization of Hydrous Ethanol Small SI Engine**
Preechar Karin, Chinda Charoenphonphanich (King Mongkut's Institute of Technology Ladkrabang)

- 20139174 **An Application of Cellulosic Liquefaction Fuel for Diesel Engine - Improvement of Fuel Property by Cellulosic Liquefaction with Plastics -**
Kohei Suzuki (Nihon University GraduateSchool), Akira Iijima, Hideo Shoji, Koji Yoshida (Nihon University)

COLLEGIATE EVENTS

Organizers: Takashi Mitome (SUZUKI MOTOR CORPORATION), Geoff McCullough (Queen's University Belfast)

- 20139100 **Aerodynamics Design for Formula SAE Car**
Tetsuya Fujimoto, Takashi Suzuki (Sophia University)
- 20139108 **System Configuration of High Regenerative Braking Energy for Student Formula EV**
Akihito Okazaki (Nippon Institute of Technology)
- 20139176 **Developing Best Available Technology in a Flex-Fuel Snowmobile by Using a Lean-Burn Miller Cycle**
Gregory W Davis, Matt Birt (Kettering University)

DIESEL ENGINE

Organizers: Takeshi Maeda (Honda R&D Co., Ltd.), Brian Callahan (Achates Power, Inc.), Paul Litke (AFRL)

- 20139005 **The Impact upon Durability of Heavy-Duty Diesel Engine equipped with SCR system Using 8 Percentage Biodiesel**
kewei Lin, Ku Yong-Yuan (Automotive Research and TestingCenter)
- 20139021 **Effect of Spray/Wall Interaction on Diesel Combustion and Soot Formation in A Two-Dimensional Piston Cavity**
Kuichun Li, Masaki Ido, Youchi Ogata, Keiya Nishida (University of Hiroshima), Daisuke Shimo (Mazda Motor Corporation)
- 20139022 **Combustion Characteristics of Emulsified Blends of Water and Diesel Fuel in a Diesel Engine with Cooled EGR and Pilot Injection**
Hideyuki Ogawa, Gen Shibata (Hokkaido University), Hari Setiapraja (The agency for assessment and application of technology (BPPT)), Takaki Kato (Hokkaido Universtiy), Kosuke Hara (YANMAR Co.,Ltd.)
- 20139024 **Multi-Injection Performance Optimization Study for a High Pressure Direct Injection Common Rail Diesel Engine**
I Ping Chang (Society of Automotive Engineers of Taiwan), Bing Yen Lin, Bo Sen Doang (Master Graduate Student of Dept. of Mechanical and Automation)
- 20139027 **Determination of performance and exhaust emissions properties of biodiesel in Common-Rail Diesel engine application**
Hsin-Wei Chiu, Kunh-Sienmr Lee, Wen-Hao Tsai, Chang-Fu Tuan, Yen-Chuan Lee, Yi-Ting Lin (Da-Yeh University)
- 20139076 **Emulsified Castor Biodiesels on the Emissions and Deposit Formation of a Small Diesel Engine**
Yung Sung Lin (Hsiuping University of Science and Technology), Hai Ping Lin (Da-Yeh University)
- 20139077 **Waste Cooking Oil Biodiesel Characteristics on the Emissions of a Small Diesel Engine with Water Emulsions**
Yung Sung Lin (Hsiuping University of Science and Technology), Hai Ping Lin (Da-Yeh University)

- 20139095 **Optimization of Biodiesel Combustion in a Diesel Engine**
Hsin-Wei Chiu (Da-Yeh University), Chia-Jui Chiang, Yu-Hsuan Su, Chih-Cheng Chou, Ying-Wei Lin (National Taiwan University of Science and Technology), Yong-Yuan Ku (Automotive Research and Testing Center)
- 20139103 **CFD Modeling of Diesel Engines**
Guan-Jhong Wang, Chia-Jui Chiang, Yu-Hsuan Su (National Taiwan University of Science and Technology), Yong-Yuan Ku (Automotive Research and Testing Center)
- 20139112 **Study of Combustion and Soot Emission of Ethanol or Butanol blended with Gas oil in Direct Injection Diesel Engine**
Shohei Yamamoto, Shotaro Watanabe, Keisuke Komada, Daisaku Sakaguchi, Hironobu Ueki, Masahiro Ishida (Nagasaki University)
- 20139154 **Diesel Engine Combustion Optimization for Bio-diesel Blends Using Taguchi and ANOVA statistical methods**
Pavlos Dimitriou, Jun Peng (University of Sussex)
- 20139155 **A New Railless Fuel Injection System for Naturally Aspirated Single Cylinder Air Cooled Diesel Engine for CO₂ and Emission Reduction**
Kaleemuddin Syed Mohiuddin, Gurpreet Singh Greaves (Greaves Cotton Limited)

EMISSIONS

Organizers: Hiromi Deguchi (SUZUKI MOTOR CORPORATION), Jim Carroll (South West Research Institute), Kai Beck (MOT GmbH), Roy Douglas (Queen's University Belfast)

- 20139050 **Exhaust Emission Characteristics of Scooter on the Real-World in Taiwan**
Kao-Chun Su, Chic-Wei Chuang (Automotive Research & Testing Center)
- 20139052 **Evaluation of the Suitability of the Existing Motorcycle Idle-Stop Devices from the Viewpoint of Emission Improvement**
Chao Lung Chen, Zong Da Lin (Industrial Technology Research Institute)
- 20139053 **Durable Catalyst Formulations For Four-stroke Small Engines**
Willi Boll, Marcus Bonifer, Rainer Kiemel, Uwe Endruschat (Heraeus Precious Metals GmbH & Co.KG)
- 20139055 **An Investigation of Motorcycle Deterioration for Exhaust Emission in Taiwan**
Shin Hui Lin, Chao Lung Chen (Industrial Technology Research Institute)
- 20139057 **New VM R750 Engine Family: a Different Approach to Reach the Emission Limit.**
Lorenzo Pace, Manuel Presti (Emitec G.m.b.H.), Alessandro Mazza, Emilio Bertoni, Carlo Ricci (VM Motori)
- 20139064 **Drive Cycle Fuel Economy Optimization Using an Opposed-Piston Sleeve-Valve Engine with Load/Speed Dependant Lean Operation and Ignition Advance as NO_x Control Mechanisms for Spark Ignited Carbureted Small Vehicles with 2-Way Oxidation Catalysts**
Michael A Willcox, James M Cleaves (Pinnacle Engines)
- 20139088 **Dynamic Modeling of SCR de-NO_x Systems**
Chih-Cheng Chou, Chia-Jui Chiang (National Taiwan University of Science and Technology)
- 20139091 **1-D Modeling and Experimental Evaluation of Secondary Air Injection System (SAI) for a Small SI Engine**
Pratap Chandrashekar Kavekar, Dinesh B Ghodeswar (TVS Motor Company Ltd.)
- 20139129 **The Analysis of Size and Mass Distribution of Particulate Matter Generated by Handheld Machinery**
Jerzy Merkisz, Piotr Lijewski, Pawel Fuc, Andrzej Ziolkowski, Lukasz Rymaniak (Poznan University of Technology)

- 20139130 **A Demonstration of Emissions' Behaviour of Various Handheld Engines Including Investigations on Particulate Matter**
Juergen Tromayer, Gerd Neumann (Graz University of Technology), Cécile Favre, John May, Dirk Bosteels (Association for Emissions Control by Catalyst (AECC) AISBL, BELGIUM)
- 20139137 **Performance and Emission Study of a Four Stroke Single Cylinder Diesel Engine Using Diesel-Water Emulsion**
Anuj Pal, Chinmaya Mishra, Naveen Kumar (Delhi Technological University)
- 20139142 **Quantification of Performance and Emission Characteristics of Diesel Biodiesel-water Emulsion on a 8HP engine Employing EGR**
Sahil Gupta, Manish Iyer, Anuj Pal (Delhi Technological University)
- 20139150 **Physical Characterization of Biodiesel Particle Emission by Electron Microscopy**
Preechar Karin, Chinda Charoenphonphanich (King Mongkut's Institute of Technology Ladkrabang), Nuwong Chollacoop (National Science and Technology Development Agency), Katsunori Hanamura (Tokyo Institute of Technology)
- 20139152 **Enhanced Catalytic Performance of V2O5-WO3/TiO2 Honeycomb for SCR Catalysts Applications**
Kuan-Zong Fung, Shu-Yi Tsai (National Cheng Kung University)
- 20139058 **Misfire Diagnostic Strategy for Motorcycles**
Bo-Yu Gao, Hsien-Chi Tsai, Ming-Hao Chiang, Yuh-Yih Wu, Bo-Chiuan Chen (National Taipei University of Technology)

ENGINE COMPONENTS

Organizers: Toshimi Kobayashi (Kawasaki Heavy Industries, Ltd.), David Thornhill (Queen's University Belfast)

- 20139016 **Design and Development of Centrifugal Type Decompression Device of Engine**
Po-chun Liu, Chih-wen Yu, Yu-wei Ning (Sanyang Industry Co., Ltd)
- 20139046 **The Effect of Surface Morphology of Cylinder Bore Surface on Anti-Scuffing Property Made by High Pressure Die-Casting Process Using Hyper-Eutectic Al-Si Alloy**
Takehiro Uhara (Yamaha Motor Co., Ltd.)
- 20139068 **Development of Advanced Propeller Damper (Shift Dampener System)**
Yohei Kuroki, Hiroyuki Tsunekawa, Shunsuke Yukawa (Yamaha Motor Co., Ltd.)
- 20139073 **Experimental Investigations of Forced Air Cooling for Continuously Variable Transmission (CVT)**
Abhishek Lakhanlal Vaishya, Sachin Phadnis (TVS Motor Company Limited)
- 20139102 **Improvement of Powder Metallurgy Gears for Engines and Transmissions**
Paul Skoglund (Höganäs China Ltd), Anders Flodin (Höganäs AB, Sweden), Ola Litström (Höganäs China Ltd)
- 20139163 **Continued Optimization of Automotive Grade Idle Air Control Valve for Small Engines**
Dian Hong (Continental Automotive Wuhu Co., Ltd), Jie Ren, Jean Fanielle, Alois Christiaens (Continental Automotive Belgium N.V.), Craig A Weldon, Yvon Sterling (Continental Tire Canada Inc.)

ENGINE CONTROLS

Organizers: Masayoshi Uno (Kawasaki Heavy Industries, Ltd.), Thorsten Raatz (Bosch), Tony Szczotka (Bosch), Joe Lomonaco (Harley-Davidson Motor Company)

- 20139003 **Flex-Fuel Strategy for 2-Wheeler**
Erika Xavier, Ariel Bepu, Martin Marcelo Leder, Walter Arens (Robert Bosch Brazil)
- 20139007 **A 5cm Square Gasoline Engine Controller Based upon a New System in Package Semiconductor Device**
Mike Garrard (Freescale Semiconductors)
- 20139008 **Integrated Stage III/IV CDI Reference Design for Conventional Carburetor and Valve Actuated Electronic Carburetor Motorcycles.**
Ralph C J Ferrara (Freescale Semiconductor)
- 20139011 **Components Networking and Integration in EFI System**
Lang Wu, jianbing zhuang (CHANGAN VISTEON ENGINE CONTROL SYSTEMS CO,LTD.)
- 20139019 **Efficient Electrical Load Control Module**
Manikandan T, Sarmadh Ameer Shafi Khan, Sivakumar Arumugham, Varunkumar C (TVS Motor Company)
- 20139020 **Optimization Process for a Small Engine Control Unit**
Christian Schweikert (Infineon Technologies), Marco Nicolo (Infineon Technologies AG), David Witt (Infineon Technologies North America Corp.)
- 20139037 **Online Engine Speed Based Adaptation of Air Charge for Two-Wheelers**
Christian Steinbrecher, Bastian Reineke, Jürgen Berkemer (Robert Bosch GmbH), Henning Heikes (Robert Bosch GmbH), Wolfgang Fischer (Robert Bosch GmbH)
- 20139040 **Construction of Data-setting Configuration Using Prescribed Template and Profile for Competition Motorcycles**
Takashi Suda (Keihin Corporation), Yue Zhou (Keihin R&D China Co., Ltd.), Koichi Tsunokawa, Satoru Kanno, Xi Sun (Keihin Corporation)
- 20139041 **Model Reduction of Intake Air Dynamics in Single-cylinder Four-stroke Engine**
Shun-ichi AKAMA, Yasunori MURAYAMA, Shigeho SAKODA (Yamaha Motor Co., Ltd.)
- 20139042 **Torque Control of Rear Wheel by Using Inverse Dynamics of Rubber/Aramid Belt Continuous Variable Transmission**
Shun-ichi AKAMA, Yasunori MURAYAMA, Shigeho SAKODA (Yamaha Motor Co., Ltd.)
- 20139061 **Estimation of Intake Manifold Absolute Pressure Using Extended Kalman Filter**
Hsien-Chi Tsai, Bo-Chiuan Chen, Yuh-Yih Wu (National Taipei University of Technology)
- 20139062 **Development of Torque-Based Engine Management System for Range Extender Engine**
Yao-Chung Liang, Yu-Wen Peng, Yuh-Yih Wu, Hsien-Chi Tsai (National Taipei University of Technology)
- 20139065 **Detect the Misfire of Motorcycle Engine with Wide Band Oxygen Sensor**
Yameogo Amadou, Wu Chang Tai, Jiang Yu Cheng, Lu. Jau Huai (National Chung Hsing University)
- 20139066 **Providing Calibration Tools for Cost Sensitive Electronic Control Systems.**
Philip S Tobin (EFI Analytics, Inc.)
- 20139074 **An Optimised Hardware for a Cost-Effective Three-Phase Starter-Generator System**
Surajit Das, salil Joshy (TVS Motor Company Ltd)
- 20139094 **Implementation of software and hardware solutions for battery less systems.**
Marco Cortecchia, Claudio Gonella (Mectronik)

ENGINE TECHNOLOGY

Organizers: Hideyuki Okumura (Yamaha Motor Co., Ltd.), Minoru Iida (Yamaha Motor Co., Ltd.), Nagesh Mavinahally (Mavin Tech), Sebastian Strauss (Stihl)

- 20139015 **High Performance Characteristics of the Motorcycle Powered by a Four-Stroke Small 50cc-125cc Engine at the Expense of a Positive Displacement Air Compressor as a Supercharger**
Konstantin Evgenievich Starodetko, Simon Simand, Tcheslav Bronislavovich Drobychevskj (International Academy of Information Technologies (IAIT)), Aliaksandr Aliksandrovich Vit-siaz (Bereza Motor Rebuilt Plant), Vladimir Jurievich Belyaev, Konstantin Nikolaevich Yurchuk (International Academy of Information Technologies (IAIT)), Dmitry Vasilievich Kuzmenkov (Tascotrade Company)
- 20139032 **Extension of Lean Burn Range by Intake Valve Offset**
Hideki Saito, Takamori Shirasuna, Tomokazu Nomura (Honda R&D Co., Ltd.)
- 20139039 **Proof-of-Concept Development and Evaluation of a 6-Cycle Engine System.**
Gerald E Kashmerick (Kashmerick Engine Systems LLC)
- 20139060 **An Investigation on Cranking Torque Reduction for Four-Stroke Motorcycle Engine**
Yong-Jing Zou, Yuh-Yih Wu, Hsien-Chi Tsai, Hsin-Hong Lin (National Taipei University of Technology)
- 20139081 **Numerical Investigations of Overexpanded Cycle and Exhaust Gas Recirculation for a Naturally Aspirated Lean Burn Engine**
Denis Neher, Maurice Kettner, Fino Scholl (University of Applied Sciences Karlsruhe), Markus Klaisle, Danny Schwarz (SenerTec Kraft-Wärme-Energiesysteme GmbH), Blanca GiménezOla-varria (University of Valladolid)
- 20139084 **Development of an Novel Non-eccentric Rotational Engine "Ishino Engine" (Fundamental Configuration and Characteristics)**
Yojiro Ishino, Keisuke Teshima, Hiroyuki Fujii, Yusaku Yamamoto, Yu Saiki (Nagoya Institute of Technology)
- 20139086 **The Study of Intake System and Modifications for a Piston Type Compressed Air Engine**
Chih Yung Huang, Chih Jie Yu, Yuan Wei Wang, Cheng Kuo Sung (National Tsing Hua University)
- 20139092 **Modular Design and Application for a New V2 Engine**
Ben Yang, Lance Hsu, wsliaw Liaw (China Engine Corporation)
- 20139093 **Re-Starting Characteristics of a Motorcycle Engine as Performing an Idle-stop Approach**
Yu Fu Peng, Horng Rong Fang, Chiu Wei Cheng, Wu Dong Han (Kun Shan University), Tsai Chien Hsiung, Tseng Chyuan Yow (Pingtung University of Science and Technology), Liao cheng hsun (Kun Shan University)
- 20139104 **Development of New Industrial Spark Ignited Bi-Fuel Engine**
Koji Fujimura, Shinji Kishi, Takeshi Kawasaki, Takahiro Tokunaga, Kentaro Shiraishi (Kubota Corporation)
- 20139105 **Investigation on Friction Behaviour of a Single Cylinder Gasoline Engine**
T Sukumaran Vipin, Joseph Sumith (TVS Motor Company Ltd)
- 20139114 **Effects of EGR on Knock-level of Small Spark Ignition Engine with Gasoline-base Kero-sene-mixed Fuel**
Hiroshi Enomoto (Kanazawa University), Hirotaka nozue (Shizuoka Institute of Science and Technology), Noboru Hieda (Kanazawa University)
- 20139118 **Improving the Fuel Economy of Supercharged Engine**
Yoshiki Fukuhara, Takashi Suzuki (Sophia University)

- 20139153 **D-Cycle (Differential-Stroke Cycle) Scooter Engines, 50cc and Smaller**
Miin Jeng Yan (Yan Engines, Inc)
- 20139160 **The Numerical Investigation on the Performance of Rotary Engine with Leakage, Different Fuels and Recess Sizes**
DUN ZEN JENG, Ming-June Hsieh, Chih-Chuan Lee (Chung-Shan Institute of Science and Technology), Yu Han (National Chung Hsing University)
- 20139161 **The Intake And Exhaust Pipe Effect on a Rotary Engine Performance**
DUN ZEN JENG, Ming-June Hsieh, Chih-Chuan Lee (Chung-Shan Institute of Science and Technology), Yu Han (National Chung Hsing University)
- 20139169 **Predictive Simulation of PFI Engine Combustion and Emission**
Hisashi Goto, Takeshi Morikawa, Mineo Yamamoto, Minoru Iida (Yamaha Motor Co., Ltd.)

FUEL SUPPLY SYSTEMS

Organizers: Minoru Iida (Yamaha Motor Co., Ltd.), Peter Kaub (Re-Sol, LLC), Dan Nehmer (John Deere)

- 20139047 **Development of Plastic Hose for Fuel which Reduces Pressure Pulsation**
Kota Nakauchi, Atsushi Ito, Takeshi Ohara, Hideaki Kato, Hisayoshi Ogura, Shosuke Suzuki (Honda R&D Co., Ltd.)
- 20139122 **Evaluation of Value Proposition and Interactive Features for Motorcycles with Electronic Fuel Injection for Indian Market**
PRADEEP R, Pramod R (Bosch Limited, India), Ajay Bola Shetty (Robert Bosch Engineering and Business Solutions Limited), Panduranga Prabhu (Bosch Limited, India)
- 20139126 **Numerical Simulation of Fuel Temperature Distribution in Local-contact Microwave-heating Injector**
Lukas Kano Mangalla, Hiroshi Enomoto (Kanazawa University)
- 20139128 **Evaluating the Behaviour of Carburetted Engines Using a Fast Response Fuel Consumption Measurement Device with Minor Impact on Engine Characteristics**
Juergen Tromayer, Gerd Neumann, Roland Kirchberger, Alexander Trattner (Graz University of Technology), Hans Van den Hoevel (AVL Deutschland GmbH)
- 20139141 **An Advance Fuel System Unit for Gasoline Single Cylinder Engine**
François Jean Brun (Synerject)
- 20139167 **Measurement of Fuel Liquid Film under the Different Injection Pressure**
Keiji Muramatsu (SUZUKI MOTOR CORPORATION)

HCCI

Organizers: Tomoo Shiozaki (Honda R&D Co., Ltd.), Yasuo Moriyoshi (Chiba University),
Jaal Ghandhi (University of Wisconsin-Madison), William Attard (MAHLE Powertrain)

- 20139031 **A Study of the Effects of Varying the Compression Ratio and Fuel Octane Number on HCCI Engine Combustion Using Spectroscopic Measurement**
Akira Terashima, Naoya Ito, Tomoya Tojo (Nihon University Graduate School), Akira Iijima, Koji Yoshida, Hideo Shoji (Nihon University)
- 20139054 **Influence of Fuel Properties on Indicated Thermal Efficiency of Premixed Diesel Combustion**
Qian Xiong, Kazuki Inaba, Hideyuki Ogawa, Gen Shibata (Hokkaido University)
- 20139069 **Model-Based Combustion Control of a HCCI Engine with Re-Breathing EGR System**
Yusuke Nakamura, Fumiya Ando, Jung Dong-Won, Norimasa Iida (Keio University)
- 20139070 **A Study of Fuel and EGR Stratification to Reduce Pressure-Rise Rates in a HCCI Engine**
Kyohei Ozaki, Dong-Won Jung, Norimasa Iida (Keio University)
- 20139083 **Potential of Stratification Charge for Reducing Pressure-Rise Rate in HCCI Engines Analysis Elementary Reaction Calculation and Experiments Using Rapid Compression Machine**
Shota Ito, Hiroki Ikeda, Dong-Won Jung, Norimasa Iida (Keio University)
- 20139090 **A Parametric Study of HCCI Combustion Processes – The Effects of EGR and Boost Pressure for Single- and Two-Stage Ignition Fuels**
Dong-Won Jung, Norimasa Iida (Keio University)
- 20139098 **A Study of Controlled Auto Ignition Engine Fueled with Natural Gas**
Hibiki Koga, Toshiro Kiura (Honda R&D Co.,Ltd.)
- 20139101 **Dynamic Modeling of a Motorbike HCCI Engine**
Lawrence Lai, Wen-Bin Cho, Yu-Teng Chang, Chin-Jui Chiang (National Taiwan University of Science and Technology)
- 20139109 **Combustion Timing Control of a Single-Cylinder HCCI Engine with External EGR**
Xue-Ru Lu, Chia-Jui Chiang (National Taiwan University of Science and Technology), Po-Hsiu Lu, Jun-Yi Wu (CHINA ENGINE CORPORATION)
- 20139136 **Utilization of CNG in HCCI Engine**
Shivank Garg, Saurabh Puri, Amarjot Singh Parmar, Naveen Kumar (Delhi Technological University)
- 20139166 **Optical Investigation of the Knocking in an HCCI Engine**
Akira Iijima (Nihon University), Naoya Itoh, Akira Terashima, Tomoya Tojo (Nihon University Graduate School), Mitsuaki Tanabe, Koji Yoshida, Hideo Shoji (Nihon University)
- 20139171 **A Study of Supercharged HCCI Combustion Using In-cylinder Spectroscopic Techniques and Chemical Kinetic Calculation**
Yasuhide Abe, Yuma Ishizawa, Go Emori, Mitsuo Asanuma (Nihon University Graduate School), Akira Iijima, Hideo Shoji (Nihon University), Kazuhito Misawa, Yusuke Kiguti, Hiraku Kojima, Shunichi Mori, Kenjiro Nakama (SUZUKI MOTOR CORPORATION)
- 20139172 **Evaluations of the Performance of a Boosted HCCI Gasoline Engine with Blowdown Supercharge System**
Shunsuke Gotoh, Tatsuya Kuboyama, Yasuo Moriyoshi (Chiba University), Koichi Hatamura (Hatamura Engine Research Office), Toshio Yamada (IDAJ Co.,LTD.), Junichi Takanashi, Yasuhiro Urata (Honda R&D Co., LTD.)

HYBRIDS, ELECTRIC DRIVES AND FUEL CELLS

Organizers: Yasuyuki Muramatsu (Yamaha Motor Co., Ltd.), Glenn Bower (University of Wisconsin-Madison), Jay Meldrum (Michigan Technological University)

- 20139006 **Development of a New Regenerative Braking System**
Takahiro Noyori, Setsuko Komada, Takuro Awakawa (SUZUKI MOTOR CORPORATION)
- 20139009 **Design and Analysis of Single-Cylinder 22 HP Hybrid Powertrain for Motorcycles**
Chun Hsien Wu, Wei Ming Su, Pei Jen Wang (National Tsing Hua University)
- 20139018 **Self-Learning Regenerative Braking Controller Design for Electric Vehicles**
Chien-An Chen (Automotive Research & Testing Center)
- 20139035 **A Research on the Application Layer Protocols of Wireless Communication of Electric Vehicle**
Steven Lai (Automotive Research & Testing Center)
- 20139045 **Application of Nickel-Iron Alloy Coated Torque Sensor to Pedal-Equipped Electric Vehicles**
Kentaro Ikegami (Honda R&D Co.,Ltd.)
- 20139071 **Development of Belt-Driven Starter-Generator Control Strategy for Hybrid Electric Vehicle**
Qing Lin Chen (China Engine Corporation)
- 20139072 **Development of the Idle-Stop Starter with Pre- and Post-Engage Pinion Gear**
Chih Wei Hu (China Engine Corporation)
- 20139087 **Two-Speed Automatic Transmissions of Electric Scooters**
Kuo-ching Chen, Ching-ya Chen, Keng-tso Chuang, Han-hsueh Liu (China Motor Corporation)
- 20139089 **Optimal Control Strategy of a Generation Set in a Range Extended Electric Vehicle**
Chien-Hsun Wu, Jian-Feng Tsai (Industrial Technology Research Institute), Yi-Hsuan Hung (National Taiwan Normal University), Wen-Shu Chiang, Han-Ying Wang (Industrial Technology Research Institute)
- 20139099 **Heat Transfer Analysis of Electric Motorcycle Propulsion System Power Module**
Kou-Tzeng Frank Lin, Shin-Hung vernon Chang, Jian-Feng Jeff Tsai, Yung-Chun Wang, Por-Tseng Sung (Industrial Technology Research Institute)
- 20139119 **The Development of Contactless Torque Sensor for Electric Power Assist Bicycles**
Chau Chih Yu, Vector Yeh (Automotive Research & Testing Center)
- 20139120 **Study of Different Arrangement of Magnets for the Purpose of Reducing Magnet Usage in Designing an Integrated Starter/Generator for Hybrid Vehicles**
Jung-Ho Cheng, Kai-Fan Hsueh (National Taiwan University), Yi-Shen Chen, Andrew Lu (CEC Engine Co., Ltd.)
- 20139132 **Single Cylinder 25kW Range Extender as Alternative to a Rotary Engine Maintaining High Compactness and NVH Performance**
Christian Hubmann (AVL)

LUBRICANTS

Organizers: Hirotaka Kurita (Yamaha Motor Co., Ltd.), Brent Dohner (Lubrizol Corporation)

- 20139013 **Study of Lower Viscosity Motorcycle Engine Oils for Fuel Saving (3) -Effect of Polymer for Anti-fatigue Performance-**
Nobuaki Watanabe, Akira Mitarai (Idemitsu Kosan Co.,Ltd.)
- 20139033 **Highly Efficient, Low Viscosity Lubricantfor Sport Motorcycle Applications – Fuel Economyand Durability Testing**
Gianluigi Zoli, Cliff Newman, May Turner (Castrol Ltd)
- 20139063 **Improving Fuel Efficiency of Motorcycle Oils**
Brent Dohner, Alex Michlberger, Chris Castanien (The Lubrizol Corporation), Ananda Gajanayake (Lubrizol Japan Ltd.), Sumitaka Hirose (Honda R&D Co., Ltd.)

MATERIALS

Organizers: Hirotaka Kurita (Yamaha Motor Co., Ltd.), David Palmer (BRP)

- 20139012 **High Performance Polymers for Small Engine Applications**
Stephen Thomas Gurchinoff, Andre Carvalho, Brian Stern (Solvay Specialty Polymers)
- 20139029 **Plasma Spraying to the Cylinder of Outboard Motor**
Hideya Kumagai (Yamaha Motor Co., Ltd.)
- 20139049 **Corrosion Resistance Improvement Technology of Anodic Oxide Films on Aluminum Alloy That Uses a Lithium Hydroxide Solution**
Masahiro Fujita, Hiroomi Tanaka, Hitoshi Muramatsu (SUZUKI MOTOR CORPORATION), Sachiko Ono, Hidetaka Asoh (Kogakuin University)
- 20139082 **Application of Vacuum Assisted Carbide Dispersion Carbonitriding to Connecting Rods**
Tsuyoshi Kubota, Hirofumi Kawata (Yamaha Motor Co., Ltd.)
- 20139110 **Creep Resistance of 2024 Aluminum Alloy**
Le Min Wang, Chih Jrn Tsai (National Defense University)
- 20139111 **Development of Die-cast Alloy for Motorcycle Body Parts Using Recycled Aluminum**
Yukihide Fukuda (Honda R&D Co., Ltd.)

MEASUREMENT AND SIMULATION

Organizers: Tadao Okazaki (Kubota Corporation), Stephan Schmidt (Graz University of Technology)

- 20139010 **Effect of thickness ratio on fatigue and FEA life estimation criteria in welded structures**
Govardan Daggupati (TVS Motor Company Limited)
- 20139023 **A Comparative Study on Map Based and Closed Loop Simulation Model of Coolant Circuit for a Two Wheeler Liquid Cooled Engine**
Karthikeyan N, Anish A Gokhale (Mahindra 2 Wheelers Limited)
- 20139034 **Stress Prediction of Engine Part resulting from an Engine Vibration**
Masahiro Akei, Kouichi Kouzato, Toshiyuki Uyama (YANMAR Co.,Ltd.)
- 20139043 **Development of Strength Analysis Method for Off-Road Motorcycle Radiator Assembly**
Masakazu Yamaya, Akihiro Chiba (Yamaha Motor Co., Ltd.)
- 20139044 **Application of FEM Analysis Using Loads Predicted from Strain Measurement in Motorcycle Frame Development**
Mitsuo Hirai, Takashi Ueno, Youhei Iwaki, Shoujirou Oohama (Yamaha Motor Co., Ltd.)

- 20139079 **CFD Scavenging Simulation & Verification of a Sequentially Stratified Charged Two-Stroke Engine**
Mikael Lars Bergman, Niklas Enander, Mats Lawenius (Husqvarna AB)
- 20139096 **Development of Simulation Method for Estimation of Damages to Motorcycle Engine Parts from Tip Over in Stationary State**
Shigesato Nakamura, Hisayoshi Ogura, Kohta Noguchi, Yasuhiro Miyazaki (Honda R&D Co., Ltd.)
- 20139124 **Real World Operation of a Standard Lawn Mower Engine from a Scientific Perspective**
Hermann Edtmayer, Alexander Trattner, Stephan Schmidt, Roland Kirchberger (Graz University of Technology), Jakob Trentini, Johann Weiglhofer (Viking GmbH)
- 20139125 **Start Stop Strategies For 2 Wheelers In The Emerging Markets**
Bernd Heinzmann (Robert Bosch GmbH), Prashanth Anantha (Robert Bosch India Ltd), Simon Scholz (Robert Bosch GmbH), Pramod R (Robert Bosch India Ltd)
- 20139127 **Development of a thermal model within a complete vehicle simulation for motorcycles and powersport applications**
Paul Rieger, Joachim Girstmair, Stephan Schmidt, Raimund Almbauer, Roland Kirchberger (Graz University of Technology)
- 20139157 **Prediction of the Cavitation Effect on the Flow Around the Outboard Motor Propeller Blade Hydrofoil Section Using CFD**
Akira Kamiya (Yamaha Motor Co., Ltd.)
- 20139162 **Quasi-Steady Evaluation Method for Motorcycle Mode Fuel Consumption with One Dimensional Engine Simulation**
Masahito Saitou, Motohiko Nishimura (Kawasaki Heavy Industries, Ltd.)
- 20139170 **Trends and Challenges for Two Wheeler ECU Software Development from Road to Math to Lab**
Marcel Ovidiu Achim (ETAS GmbH)

NVH TECHNOLOGY

Organizers: Masahiko Sugimoto (Kubota Corporation), Ken Kicinski (Harley-Davidson Motor Company)

- 20139001 **Application of Novel Micro-Grooved Elements to Small Engine Silencer**
Fabio Auriemma, Hans Rämmal, Jüri Lavrentjev (Tallinn University of Technology)
- 20139121 **Energy-Decoupled Analysis for Isolating Vibration Design of a Range Extender Generator-set**
Jung-Ho Cheng, Shin-Yuen Fan (National Taiwan University), Andrew Lu, Shih-Lin Lin (CEC Engine Co Ltd)
- 20139148 **The Trial to Quantify the Feeling of Sound & Vibration (“Kodo-Kan”) for the Motorcycle.**
Kenta Suzuki, Hitoshi Uchida, Shogo Kida, Tsutomu Sonehara, Keisuke Namekawa (SUZUKI MOTOR CORPORATION)
- 20139164 **Development of Intake Sound Control Technique for Sports-Type Motorcycles**
Noritaka Nakamura, Kenta Matsubara, Youta Katsukawa, Kenichi Furuhashi (Kawasaki Heavy Industries, Ltd.)

TWO STROKE ENGINE

Organizers: Tomoo Shiozaki (Honda R&D Co., Ltd.), Scott Miers (Michigan Technological University), Brian Callahan (Achatas Power, Inc.)

- 20139036 **Development of Test Bench and Characterization of Scaling Effects on Losses and Performance in Small Internal Combustion Engines**
Joseph K Ausserer (United States Air Force), John-Russell Groenewegen (University of Dayton Research Institute), Paul Litke (Air Force Research Laboratory), Keith Grinstead (Innovative Scientific Solutions Incorporated)
- 20139078 **Engine Characteristics of a 45 cc Stratified Two-Stroke Powerhead**
Mikael Lars Bergman (Husqvarna AB)
- 20139133 **An Innovative Two-Stroke Twin-Cylinder Engine Layout for Range Extending Application**
Andrea Abis, Franz Winkler, Christian Schwab, Roland Kirchberger, Helmut Eichlseder (Graz University of Technology)
- 20139143 **Is a High Pressure Direct Injection System a Solution to Reduce Exhaust Gas Emissions in a Small Two-Stroke Engine?**
Markus Bertsch, Kai Willi Beck, Ulrich Spicher (MOT GmbH)

VEHICLE DYNAMICS AND SAFETY

Organizers: Masayuki Baba (Honda R&D Co., Ltd.), Derek Cleasby (Bosch)

- 20139004 **Steering Effort Reduction by DC Motor Assisted Steering Mechanism in Three Wheeled Vehicle**
Varunprabhu Ramaswamy, Himadri B Das, Nagarjun Reddy Mosali (TVS Motor Company), Raghu V Prakash, Sujatha Chandramohan (IIT Madras)
- 20139026 **Effects of the Compensated Control of Gradient for the Haptic Throttle Grip**
Manabu Fujito, Yasunobu Harazono, Kouji Sakai (Yamaha Motor Co., Ltd.)
- 20139106 **Development of New Concept Two-Wheel Steering System for Motorcycles**
Tetsuya Kimura, Yusuke Ando, Eiichiro Tsujii (Yamaha Motor Co., Ltd.)
- 20139151 **Dynamic Analysis of Anti Roll Bar for 3- Wheeled Vehicle with Independent Trailing Arm Suspension**
GSG Ravikanth, Nagarjunreddy M (TVS Motor Company LTD)
- 20139165 **Development of Technology for Measuring Dynamic Deformation of Motorcycle Bodies**
Yasushi Nakamura (Kawasaki Heavy Industries, Ltd.)
- 20139173 **An Evaluation of Injury Risks and Benefits of a Crush Protection Device (CPD) Concept for All-Terrain Vehicles (ATVs)**
John W Zellner, Scott A Kebschull, R Michael Van Auken (Dynamic Research, Inc.)
- 20139175 **Testing of ABS Systems for 2-Wheelers via Hardware in the Loop Technology**
Tobias Kreuzinger, Steven Shenker, Rosana Yamasakai (ETAS K. K.)

VEHICLE COMPONENTS

Organizers: Masayuki Baba (Honda R&D Co., Ltd.), Robert Kee (Queen's University Belfast)

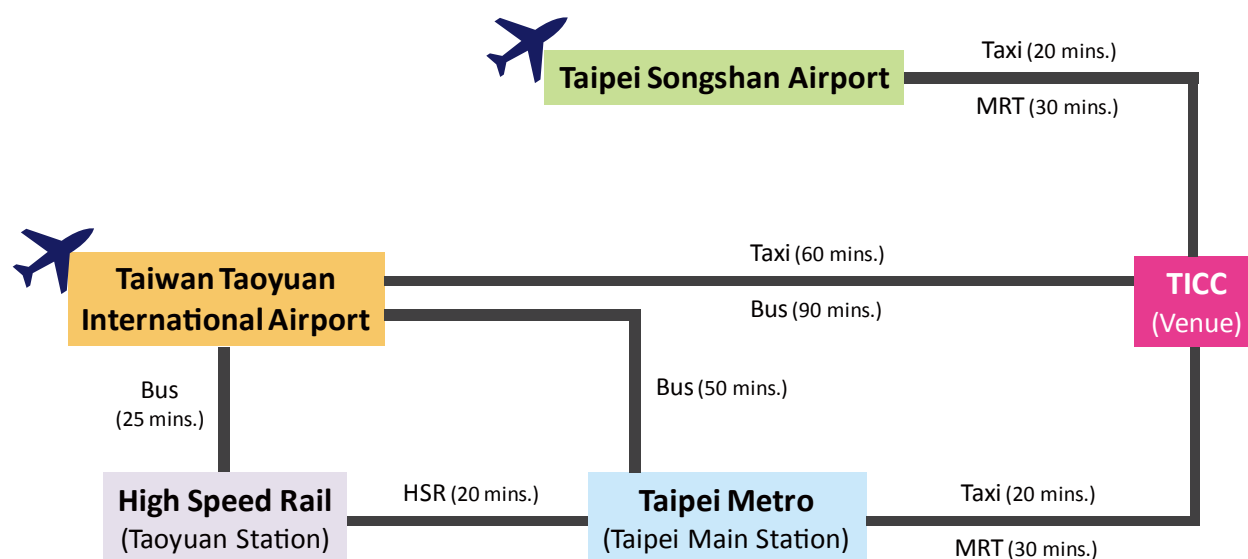
- 20139056 **Design and Analysis of Multi-Path Continuously-Variable Transmissions for Scooters**
Tyng Liu, Po-Yu Shih, Hsien-Yu Kuo (National Taiwan University)
- 20139158 **Material and Geometric Optimization of Cast Handle Bar Subjected to Shock Loads**
Gangi Reddy Dumpala, M Nagarjun Reddy (TVS Motor Company Ltd)

TRAVEL INFORMATION

AIRPORT INFORMATION

- Taiwan Taoyuan International Airport: <http://www.taoyuan-airport.com/english/Index/>
- Taipei Songshan Airport: <http://www.tsa.gov.tw/tsa/en/home.aspx>

TRANSPORTATION FROM AIRPORT



VISA APPLICATION

Visa application procedure may vary in each country. Please consult with local authorities at an earliest convenience. If an invitation letter is required to obtain an entry visa to Taiwan, please contact:

c/o Elite Professional Conference Organizer Email: setc2013@elitepc.com.tw

Tel: +886-2-8502-7087

Fax: +886-2-8502-7025

The SETC website for details of VISA application support: <http://www.setc2013.tw/VISAToTaiwan.html>.

TAIPEI INFORMATION

INTRODUCTION

The city is situated in a basin in northern Taiwan that was inhabited by aboriginal people until settlers from China moved into the area about 300 years ago. Eastern Taipei was largely underused fields until the nineteen-seventies, when the city began to develop the area as a financial and commercial district. Here, the modern face of Taipei shines through, with its glass and steel skyscrapers, wide boulevards, and the world's tallest building, Taipei 101.

Taipei also boasts dozens of world-class performance venues, where you can enjoy world-class theater and concert events. The city also offers a wide range of other diversions -- shopping malls, nightclubs, live-music bars, quality hotels, and exotic restaurants.

PUBLIC TRANSPORTATION

Taipei Mass Rapid Transit System (MRT)

The system operates according to a spoke-hub distribution paradigm, with most rail lines running radically outward from central Taipei.

- Operation Hour: Daily from 6AM to midnight; extended services during special events.
- Frequency: 1.5 to 15 minutes intervals depending on the line and time of day.
- Fare:
 - ◎ "Single-journey Ticket for Cyclists" costs NT\$80 valid for one person with a single bicycle.
 - ◎ "One-day Pass" costs NT\$150 with unlimited travel within one day; can be purchased from a service booth.

See page 55 for Taipei Metro Map.

City Bus

Taipei City Bus operates daily from 6AM to midnight with extended services during special events.

Learn more about Taipei Bus routes and schedules at <http://www.taipeibus.taipei.gov.tw/TPBUS.aspx?lang=eng>

Sightseeing in Taipei



SHILIN NIGHT MARKET

is the one of the largest night markets in Taipei. Shilin Market is famous for various snacks and eatery. Many visitors have come to Shilin Night Market to enjoy the delicious foods, such as large pancake enfoldng small pancake, hot pot on stone or Shilin sausage. Shilin Night Market has become a renowned place for great foods.

Address: Between end of Wenlin Rd., Jihe Rd. and Zhongshan N. Rd.

MRT: Take the MRT and exist at the Jiantan Stop.



GUANGHUA MARKET

is the place to go in Taipei for computer equipment and other electronic gadgets, with over a hundred shops selling the high-tech items. In addition to computers and other electronic peripherals, the market also sells branded sportswear and athletic gear, DVDs and CDs, posters, PC and console games, books, stereo equipment, mobile phones and more. The market is known for its wide variety, low prices and convenient comparison shopping, making it a magnet for budget-minded student shoppers.

Address: No.77, Jinshan N. Rd., Jhongjheng District, Taipei City

MRT: Take the MRT and exist at Zhongxiao Xinsheng Station (Exit 1) then walk about 5 minute towards Civic Blvd.



THE NATIONAL PALACE MUSEUM

houses the world's largest collection of priceless Chinese art treasures, one which spans China's nearly 5,000-year history. Most of the museum's 620,000 art objects were part of the Chinese imperial collection, which began over 1,000 years ago in the early Song dynasty.

Address: No.221, Sec. 2, Zhishan Rd., Shilin District, Taipei City

MRT: Take the MRT to the Shilin Station and take bus R30 (Red 30) to the National Palace Museum.



CHIANG KAI-SHEK MEMORIAL HALL

is located in the heart of Taipei City. The area is 250,000 square meters and it is the attraction most visited by foreign tourists. Outside the gate of Chiang Kai-shek Memorial Hall, there are poles carrying the sign of true rightness. The architecture of Chiang Kai-shek Memorial Hall is inspired by Tientam in Beijing. The four sides of the structure are similar to those of the pyramids in Egypt.

Address: No.21, Zhongshan S. Rd., Zhongzheng District, Taipei City

MRT: Take the MRT and exist at CKS Memorial Hall (Exit 5).



LONGSHAN TEMPLE

is a famous old temple in Taiwan for worshipping Guanshiyin Buddha and other divine spirits. Its architecture is a three-section design in shape built in Qianlong 5th year in Qing Dynasty. On each 1st and 15th day each month of lunar year, regular visitors will come to the temple for worship ceremony. Longshan Temple is not only a temple, a sightseeing attraction, but also a second-degree historical site.

Address: No. 211, Guangzhou St., Wanhua District, Taipei City

MRT: Take the MRT and exist at Longshan Temple Station.



TAIPEI 101

, with a mass of shops on the lower floors, incorporating many top brands under the LVMH group, such as Louis Vuitton, Dior, Celine, etc. The fourth floor houses the Page One bookstore from Singapore, with the highest-roofed coffee house in Taipei and many fine restaurants.

Address: 89F, No. 7, Sec. 5, Xinyi Rd., Xinyi District, Taipei City

MRT: Take the MRT and exist at Taipei City Hall Station then walk about 5 minute towards Xinyi Shopping District.



MAOKONG GONDOLA

is located in the southern tip of Taipei City, and the system began operation in July 2007. Since then it has evolved into a favorite tourist destination for locals and visitors. It is Taipei City's first high-altitude gondola. This French POMA-made system makes a circuit of four stations: Taipei Zoo Station, Taipei Zoo South Station, Zhinan Temple Station, and Maokong Station.

Address: Sec. 2, Xinguang Rd., Wenshan District, Taipei City

MRT: Take the MRT and exist at Taipei Zoo.

ACCOMMODATION

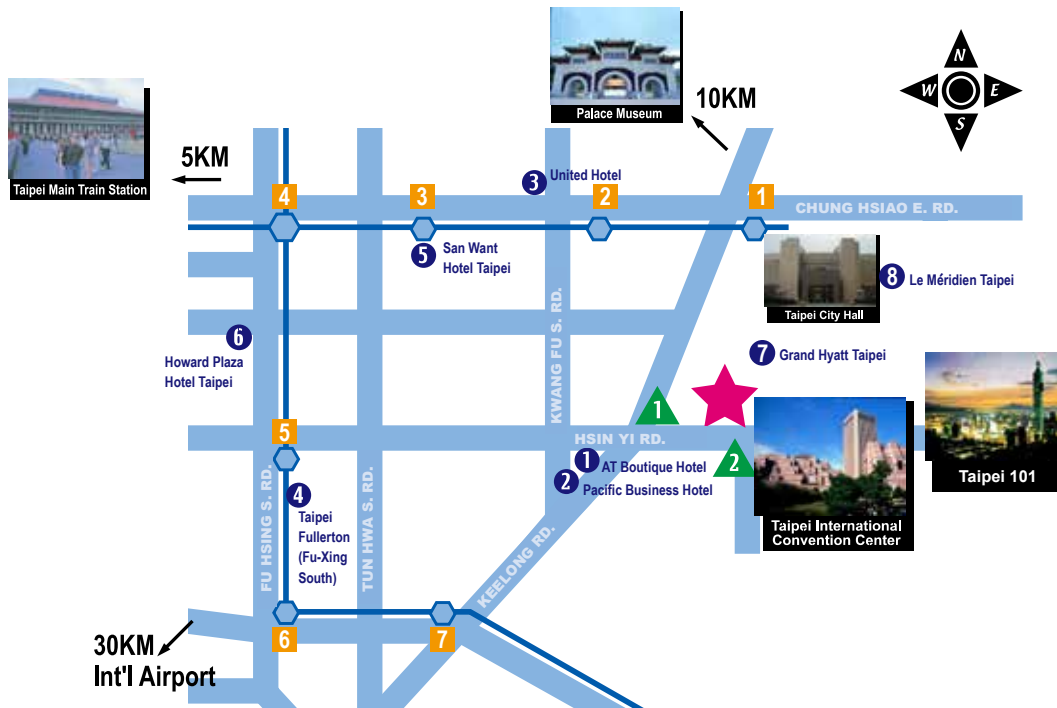
HOTEL INFORMATION

	Hotel	Reached by
Contract Hotels	① AT Boutique Hotel	Walking
	② Pacific Business Hotel	Walking
	③ United Hotel	Taxi
	④ Taipei Fullerton (Fu-Xing South)	Taxi
	⑤ San Want Hotel Taipei	Taxi
	⑥ Howard Plaza Hotel Taipei	Taxi
Non-Contracted Hotels	⑦ Grand Hyatt Taipei	Walking
	⑧ Le Méridien Taipei	Walking

Special room rate will be offered exclusively to the SETC 2013 participants. Rooms are assigned on a first come, first serve" basis, please make your reservation early.

Please download the reservation form via the conference website and directly contact to the hotel for further booking. For detailed information, please access to the Conference website: <http://www.setc2013.tw/Accommodation.html>

HOTEL MAP



★ Venue- TICC

MRT

- 1 Taipei City Hall
- 2 Sun Yat-Sen Memorial Hall
- 3 Zhongxiao Dunhua
- 4 Zhongxiao Fuxing
- 5 Daan
- 6 Technology Building
- 7 Liuzhangli

BUS STOP

- 1 Bus Line : 20,285,282,284,611,625
- 2 Bus Line : 22,33,37,226,266,288

HOTEL

- 1 AT Boutique Hotel
- 2 Pacific Business Hotel
- 3 United Hotel
- 4 Taipei Fullerton (Fu-Xing South)
- 5 San Want Hotel Taipei
- 6 Howard Plaza Hotel Taipei
- 7 Grand Hyatt Taipei
- 8 Le Méridien Taipei



AEON

MOVE AESTHETICS



Pink

Gold

Jay Chou



Patented Projector Head Light

Racing Style LED Tail Light

LED Position Light

DC 12V Power Jack

4V Electronic Fuel Injection
Ceramic Cylinder


No.41, Nanzhou, Shanshang Dist., Tainan City 74342, Taiwan (R.O.C.)
TEL + 886 6 5783988 www.aeonmotor.com

facebook Aeon宏佳騰機車





Oronite



**How will your product deliver
the performance and protection
your customers demand?**



Add Oronite®

There's no magic formula. The secret to success is still hard work, a healthy dose of persistence and true partnership. It's how Oronite does things. The performance of our high quality additives is unsurpassed. Our motivated, growth-oriented people are dedicated to your business. Above all, we do things the right way, aiming to protect your equipment and your business and reduce emissions that can harm our environment. If you're looking for performance and protection, it all adds up. To learn how we can add to your business, visit oroniteaddsup.com.

ADDING UP™

GreenTrans your natural move

GreenTrans E-bike Power System



- Quiet and Quick Acceleration
- Power Regeneration
- IP56 Accredited
- Bilateral Pedaling Torque Induction
- Intelligent Calibration and Auto Reset
- Superior BMS System Protection

GreenTrans E-scooter Series



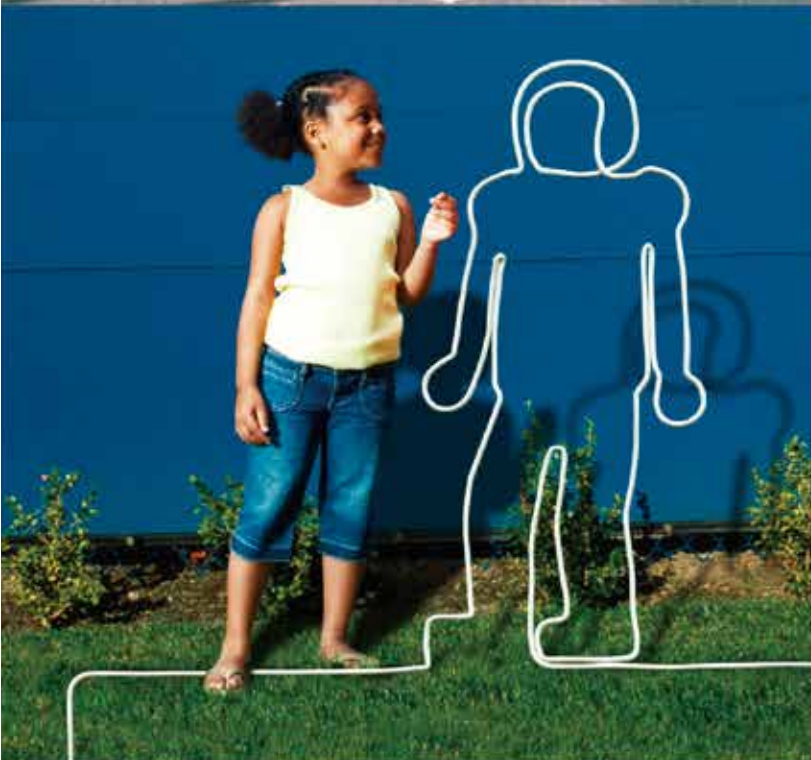
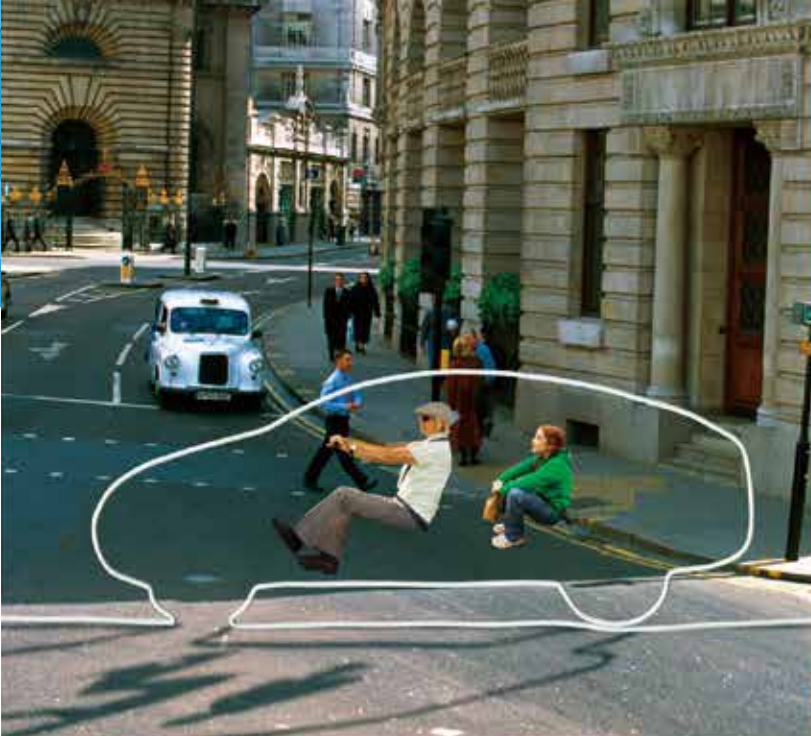
- Portable Battery
- Auto Main Stand
- Power Reverse
- Retro and streamlined styling design
- Compact, light and agile
- Leading Brand in Taiwan

環保署
2011
年度環保車
主辦單位



GreenTrans Corporation

WEBSITE: www.greentrans-eu.com
E-MAIL: overseas@greentrans.com.tw
TEL: +886.3.270.7777 FAX: +886.3.270.7780
ADD: No. 618, Sioucai Rd., Yangmei City, Taoyuan County 326, Taiwan



Happy Surprises All Around

Motorcycles, automobiles, power products, ASIMO, HondaJet. Honda has a vibrant tradition of creating mobility products that feature advanced safety technology and environmental responsibility. It's all driven by a spirit of challenge. Whenever they say it can't be done, we grow more determined to make it happen. And to offer everyone another happy surprise.

world.honda.com

HONDA



***Kawasaki,
Working as One
for the Good of the Planet***

The Kawasaki Group strives to achieve its Mission using vast technological resources gained from experience in a wide range of fields. This diverse know-how is the key to the unique brand promise offered by all Kawasaki motorcycles and leisure products.

<http://www.kawasaki-cp.khi.co.jp/>

Kawasaki

For Earth, For Life
Kubota

“Now Certified”

- Kubota all engine series have been certified to the most stringent global emission regulations.
- Kubota proven durable and reliable engines have kept the same footprint and compact design thru-out the entire line up.



KUBOTA Super Mini Series
9.9~18.5kW
0.5~0.9DISP(L)



KUBOTA 05 Series
18.5~33.0kW
1.0~1.5DISP(L)



KUBOTA 03 Series
18.5~48.6kW
1.7~2.4DISP(L)



KUBOTA 07 Series
42.0~55.4kW
2.6~3.3DISP(L)



KUBOTA V3 Series
55.4~85.0kW
3.8DISP(L)



*Regulation Level: EPA/CARB Tier4(Below 19kW&19-56kW)
EPA/CARB Int.Tier4(Over 56kW)
EU Stage IIIB(Over 37kW)

KUBOTA Corporation

Japan Kubota Corporation : <http://engine.kubota.co.jp/>

USA Kubota Engine America Corporation : <http://www.kubotaengine.com/>

Canada Kubota Canada Ltd. : <http://www.kubota.ca/>

France Kubota Europe S.A.S. : <http://www.kubota.fr/>

UK Kubota (U.K.) Ltd. : <http://www.kubota.co.uk/>

Germany Kubota (Deutschland) GmbH : <http://www.kubota.de/>

Australia Kubota Tractor Australia Pty Ltd. : <http://kubota.com.au/>

China Kubota Engine (SHANGHAI) Co.,Ltd. : <http://www.kubota-engine.com.cn/>

KYMCO

SUPER MILEAGE CUP

夢想·啟動。



以夢想和熱情 點燃希望
用智慧與行動 創造未來

KYMCO
ENGINE

SAE大會全程指定使用
KYMCO節能引擎



ECO VISION ECO DESIGN

KYMCO 電動車系列

全省569站快充
服務據點

最安心



利用電腦手機搜尋服務據點
上線後請按螢幕顯示行動



第21屆全國大專校院
環保節能車大賽

初賽時間：102年5月17日(星期五) 13:00-18:00

決賽時間：102年5月18日(星期六) 09:00-18:00

比賽地點：財團法人車輛研究測試中心

(彰化縣鹿港鎮鹿工南七路六號)

主辦單位：中華民國自動機工程學會

協辦單位：財團法人車輛研究測試中心

主要贊助商：光陽工業股份有限公司



The power
to move your business.



PRUFREX[®]

THE IGNITION COMPANY

PRUFREX is the leader and partner of choice for digital ignition modules and electronic control systems.

- Customized solutions, tailored to fit your every need
- Added value to benefit your business
- 75+ years experience engineering high-tech solutions

www.prufrex.com

Marine &
Recreation
Systems

Industry
Systems

Automotive
Systems

Small Engine
Systems

Electric &
Cordless Power
Systems



GT55300i

跑旅RV 與世界較勁

三陽工業股份有限公司
SANYANG INDUSTRY CO., LTD
新竹縣湖口鄉鳳山街1號(中港路3號)
電話：(03)5981911-9
<http://www.sym.com.tw>


SYM
精進技術 精采人生

SHYANG HUEI INDUSTRIAL CO., LTD.

Professional maker in manufacturing fuel cock, fuel pump, water pump, oil pump, carburetor, tensioner, valve, EFI pump, EFI throttle body Ass'y and etc.



You request, we evaluate!

Precisely CNC center,
welcome all kinds of tailor-made
OEM and ODM.



IT RULES.

BURGMAN

Introducing the all new BURGMAN 650



ONLY
BURGMAN

TAIWAN

the e-Supply Chain



- ◆ World class design, manufacturing, and supply of automotive electronics, electrical drives, controls, and lithium battery.
- ◆ More than \$100 B of annual exports of high quality electronics.
- ◆ One stop shop for advanced e-components and technologies.
- ◆ High efficiency and convenience supply clusters of key electrical components.
- ◆ Direct investment, sourcing, and manufacturing in China and SE Asia.
- ◆ Consistent high quality and dependable customer services.

TARC - the one stop shop for automotive R&D

- ◆ Collaborative R&D capabilities with 3500 researchers and engineers.
- ◆ World renowned R&D results with more than 600 patents in the field of intelligent and electrical vehicles.

Taiwan Automotive Research Consortium



Welcome to our Booth and www.ev.org.tw



Rev the engine. Hear it roar. Feel its power.

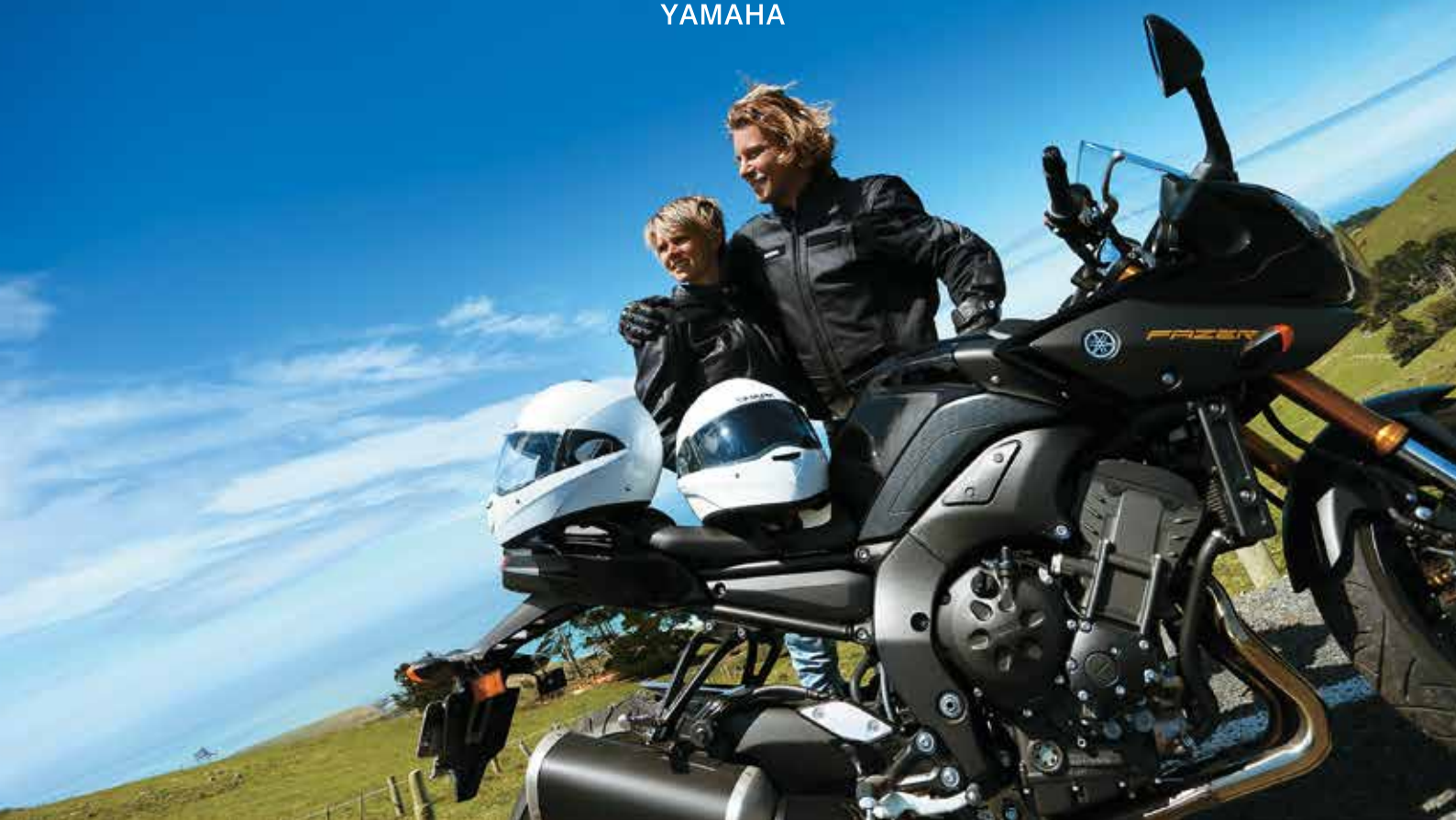
With a flick of the wrist, you soar into the wind,
your heart pounding with excitement.

Whatever route you choose – land, air, or sea –
Yamaha is there to help turn your life into legend.
Enriching every moment and touching you
in deep yet unexpected ways.

Enjoy the ride as Yamaha revs your heart and
takes you on a journey of unimaginable adventure.

Revs your Heart

YAMAHA



實現之道
YAMAHA
Road of Achievement



樂活之道
YAMAHA
Road of LOHAS



Future Innovation

絢麗之道
YAMAHA
Road of Brilliance



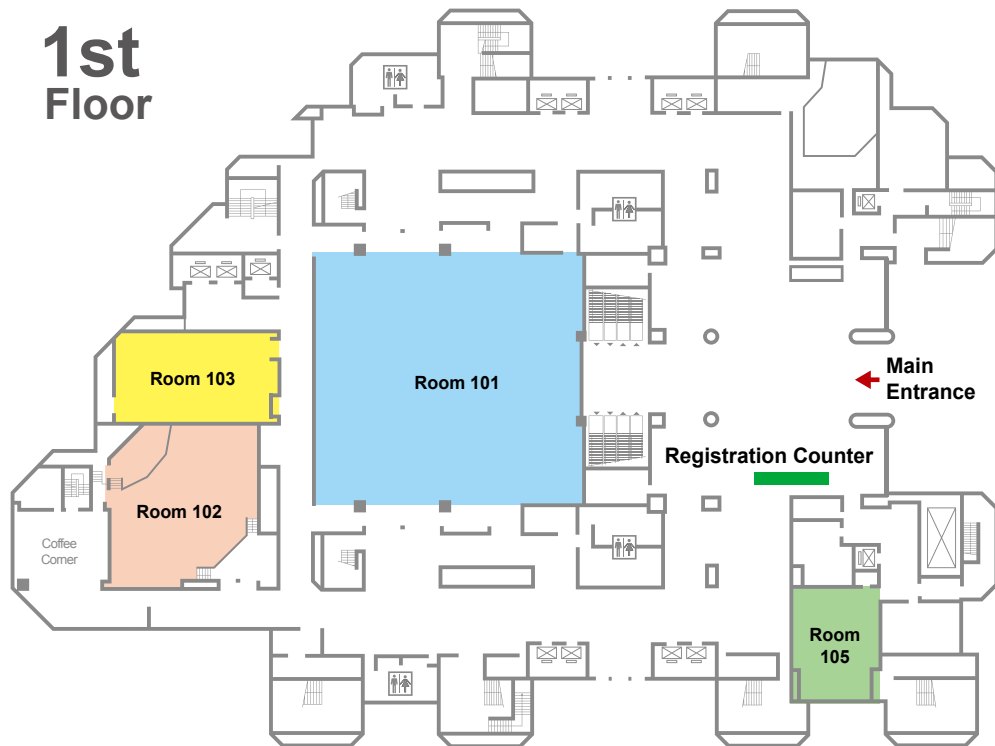
率真之道
YAMAHA
Road of Frankness



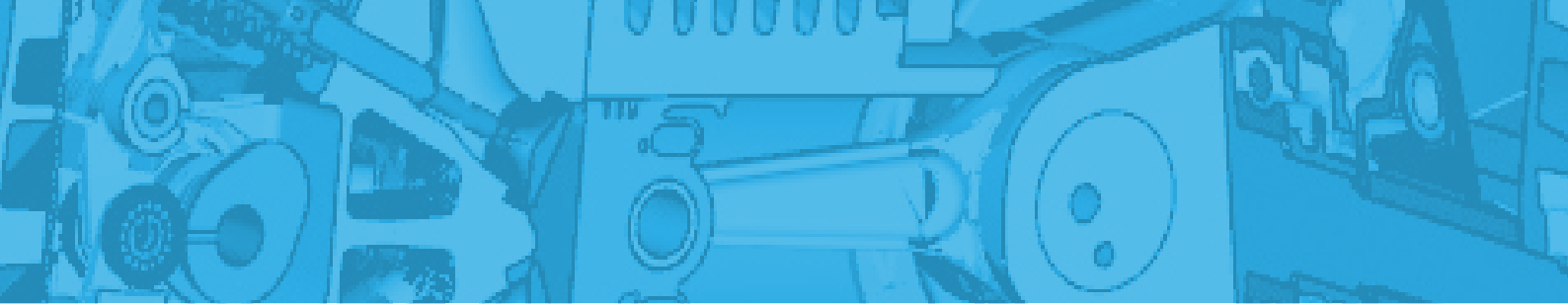
TAIPEI METRO MAP



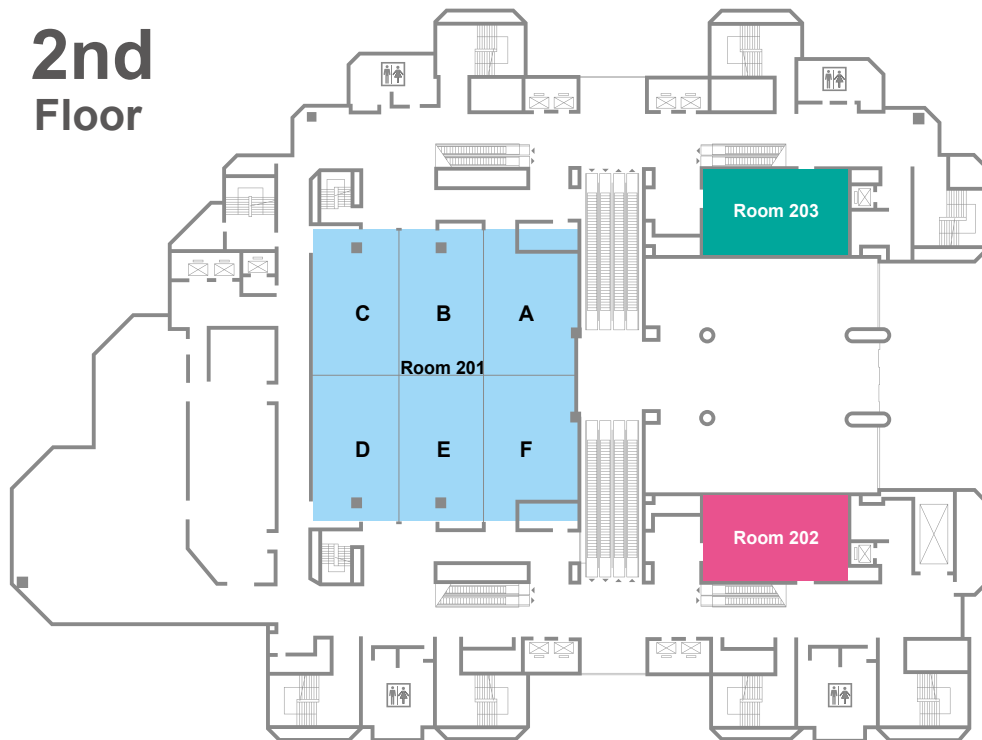
FLOOR PLAN



- **Room 101** Technical Exhibition/ Poster Session/ Coffee Break
- **Room 102** Plenary Session
- **Room 103** Technical Session
- **Room 105** Technical Session

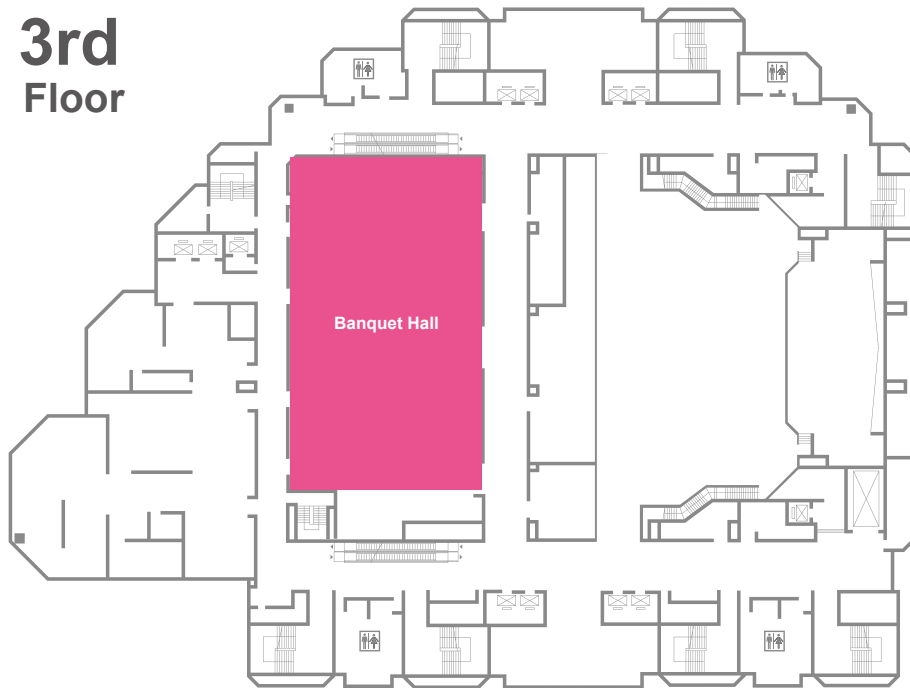


2nd Floor



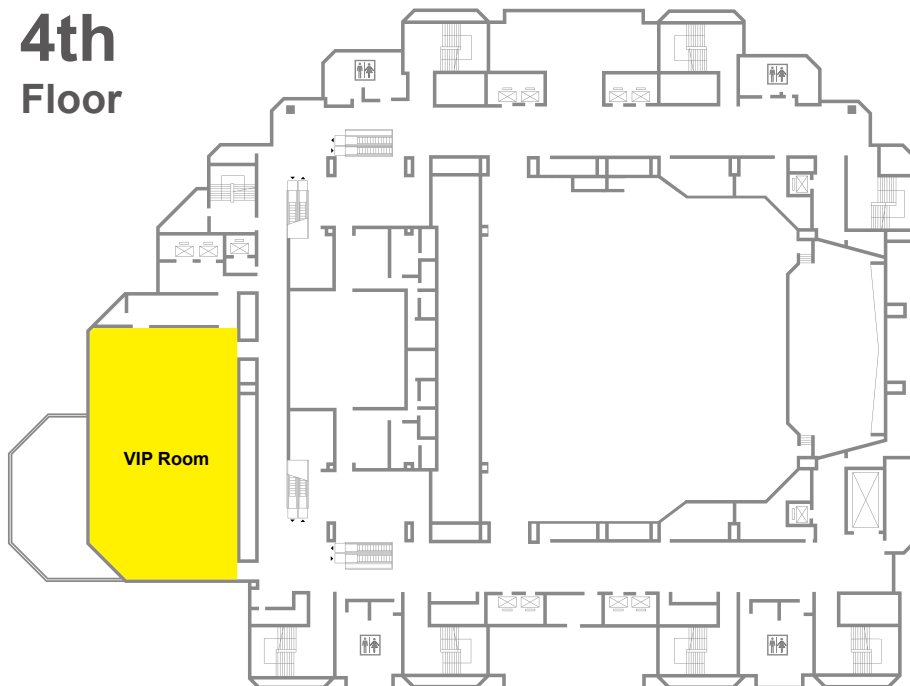
- **Room 201** Opening Ceremony & Keynote Speech(BCDE)/ Technical Sessions
- **Room 202** Secretariat Room
- **Room 203** Preview Room/ Internet Room

3rd Floor



- **Banquet Hall** Lunch/ Closing Ceremony

4th Floor



- **VIP Room** Banquet

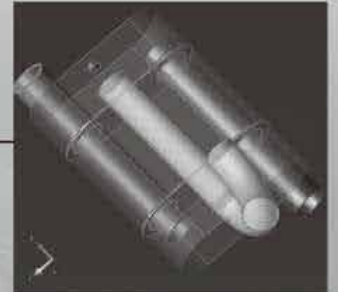
Ricardo Software

流体系シミュレーション



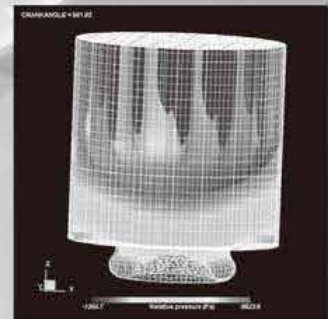
WAVE エンジン性能及び 一次元ガス・ダイナミクス・シミュレーション

WAVEは、モータースポーツを含む自動車、モータサイクル、トラック、農業機械、機関車、船用及び発電といった全ての産業分野で、世界中で使用されているエンジン性能及び一次元ガス・ダイナミクス・シミュレーション・ソフトウェアです。



主な機能と応用分野

- エンジン性能予測：
2ストローク／4ストローク、過渡／定常状態、スパーク点火／ディーゼル
- 排気及び燃焼予測
- 音響最適化
- 熱解析及び暖機
- 一次元 - 三次元連成解析
- 過渡解析：
サイクル運転／通過騒音／レース・シミュレーション



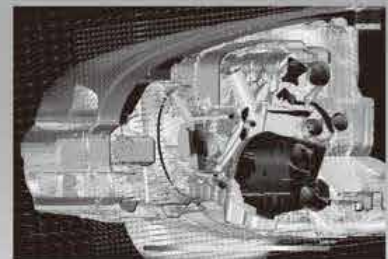
VECTIS 三次元 計算流体力学プログラム

VECTISは、車輛及びエンジン産業での流体流れシミュレーションを取り扱うことに特化して開発された、三次元計算流体力学プログラムです。VECTIS独自の自動メッシュ生成機能は、他の殆どの商用CFDツールに対する明確な優位性を持ち、これによりCFDを現実のエンジニアリング、開発計画に組み込むことを可能にします。



主な機能と応用分野

- 気筒内空気運動及び予混合
- 噴霧ダイナミクス
- 燃焼モデリング
- 吸気系要素開発及び最適化
- 排気再循環、触媒最適化及び排気マフラー等の排気系要素開発
- 冷却回路設計及び開発
- エンジンルーム内熱流体シミュレーション



その他機械系解析製品群



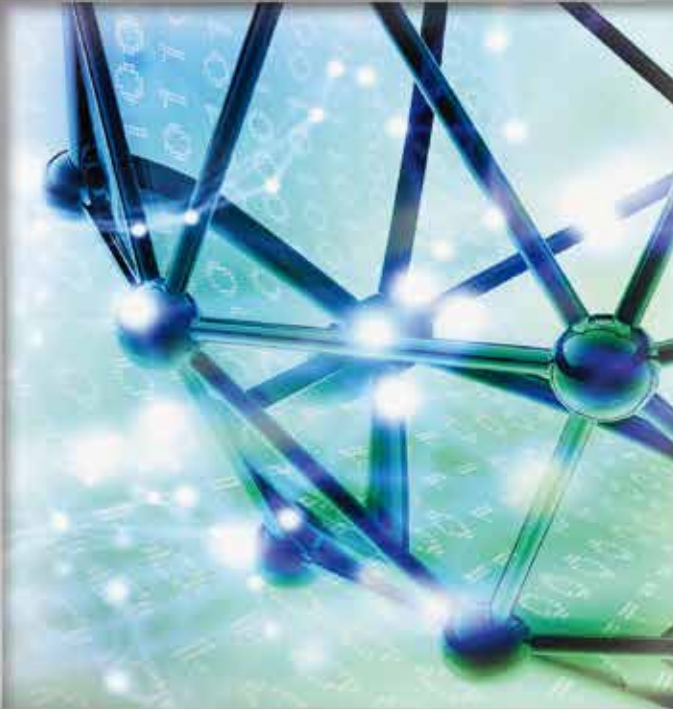
詳細については <http://www.scs.co.jp/rs/>

お問い合わせ e-mail: rs-sales@ml.scsk.jp

SCSK SCSK株式会社

製造エンジニアリング事業本部 解析ソリューション部

〒135-8110 東京都江東区豊洲3-2-20 豊洲フロント TEL.03-5859-3012 FAX.03-5859-3086



Working together, achieving great things

When your company and ours combine energies,
great things can happen.

You bring ideas, challenges and opportunities. We'll bring powerful additive and market expertise, unmatched testing capabilities, integrated global supply and an independent approach to help you differentiate and succeed.



**SUCCESS
TOGETHER**

*Visit www.lubrizol.com/successtogether
to experience Success Together.*

Lubrizol

